

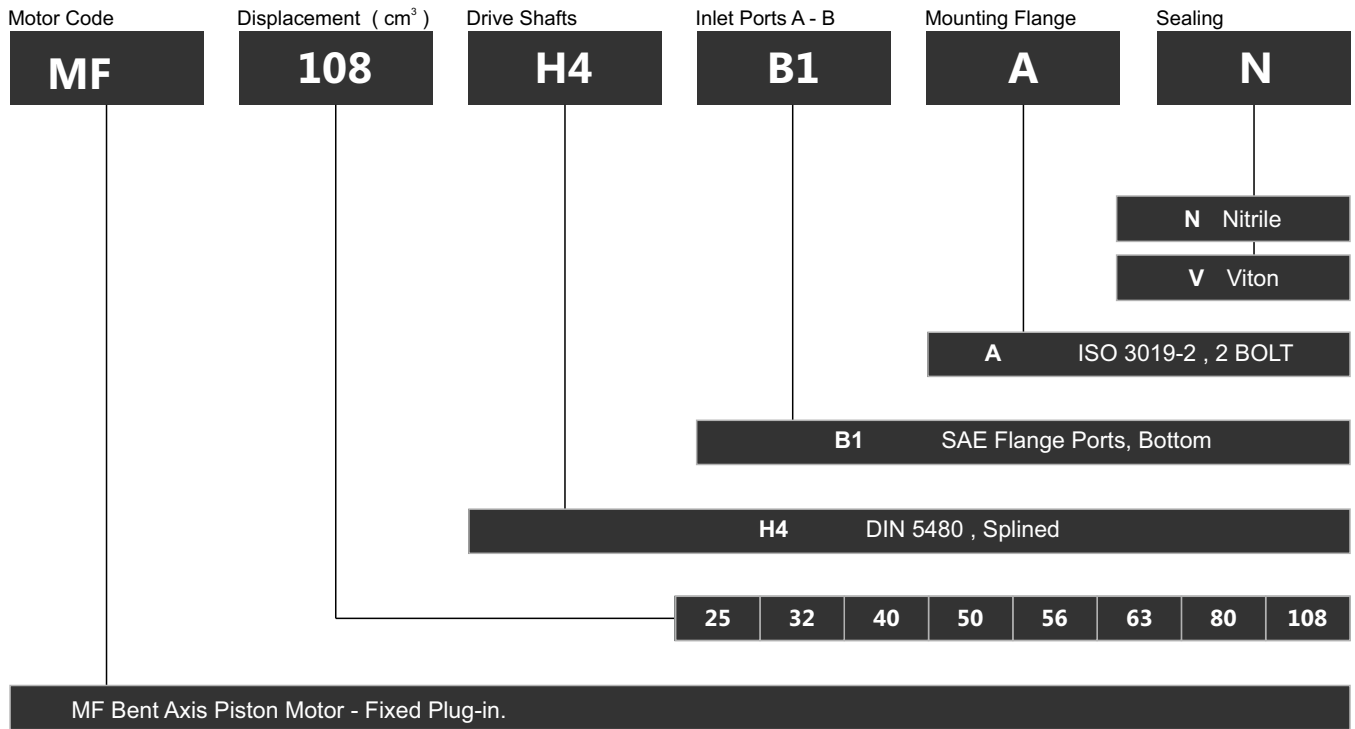
MF Fixed Bent Axis Motor

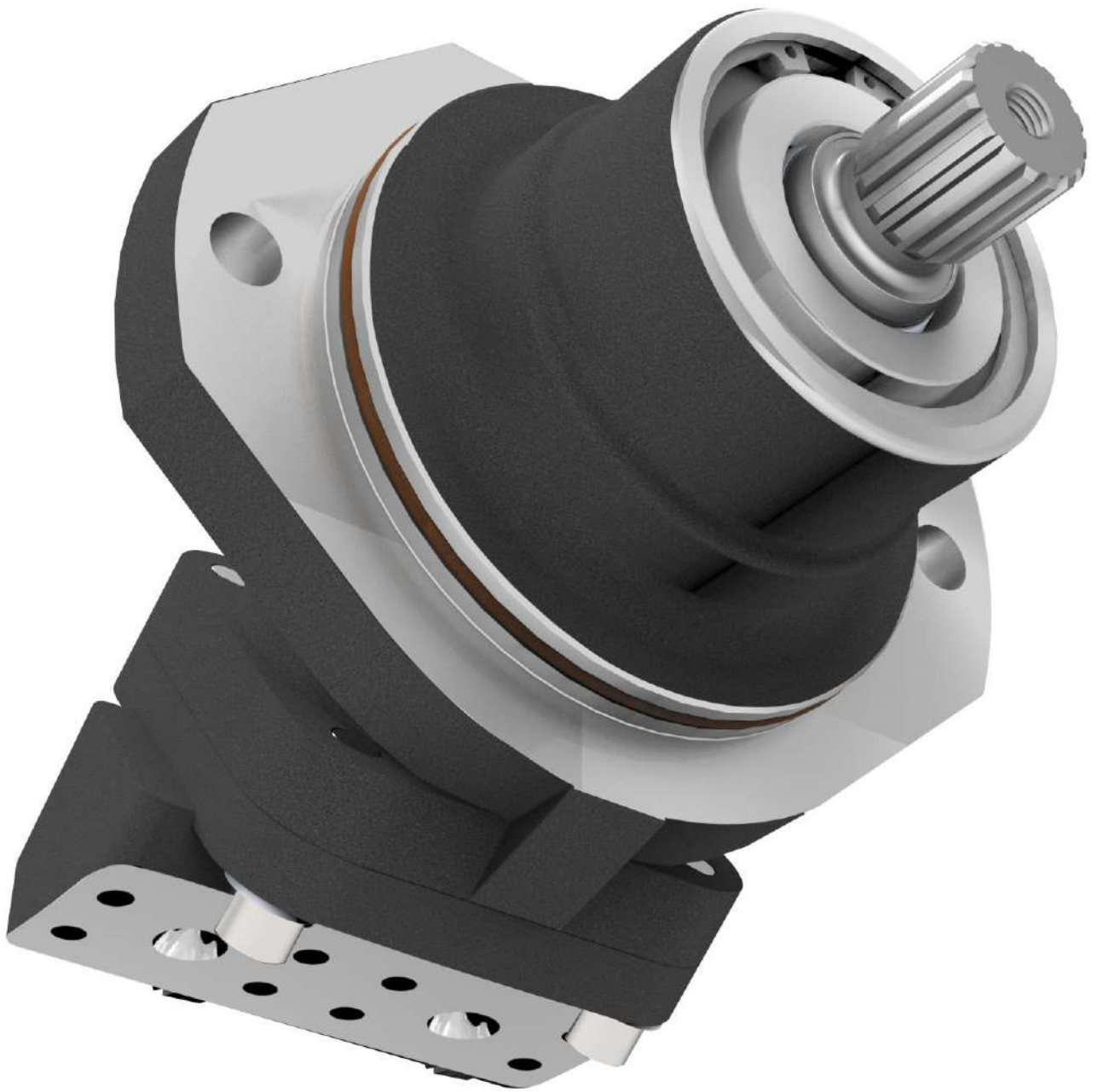


M2 Mounting Flange, Flange, 4 Bolt, 32cc to 108cc

Fixed Plugin Mounting Flange,
High Pressure Bent Axis Piston Motors. Reversible Direction of Rotation.
Displacement Range starting at; 32cc, 40cc, 50cc, 63cc, 80cc, 108cc, 130cc
400/450 Bar, High Pressure, High Rotational Speed, Slim Design, High Efficiency.

Ordering Code of MF Motors



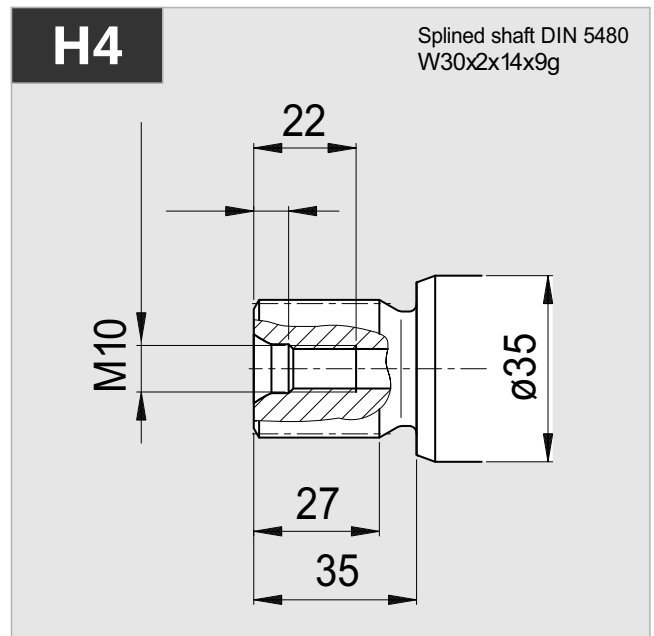
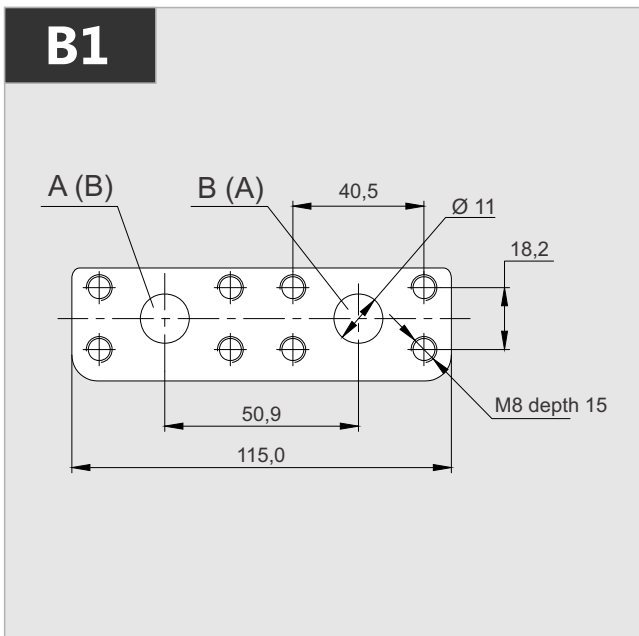
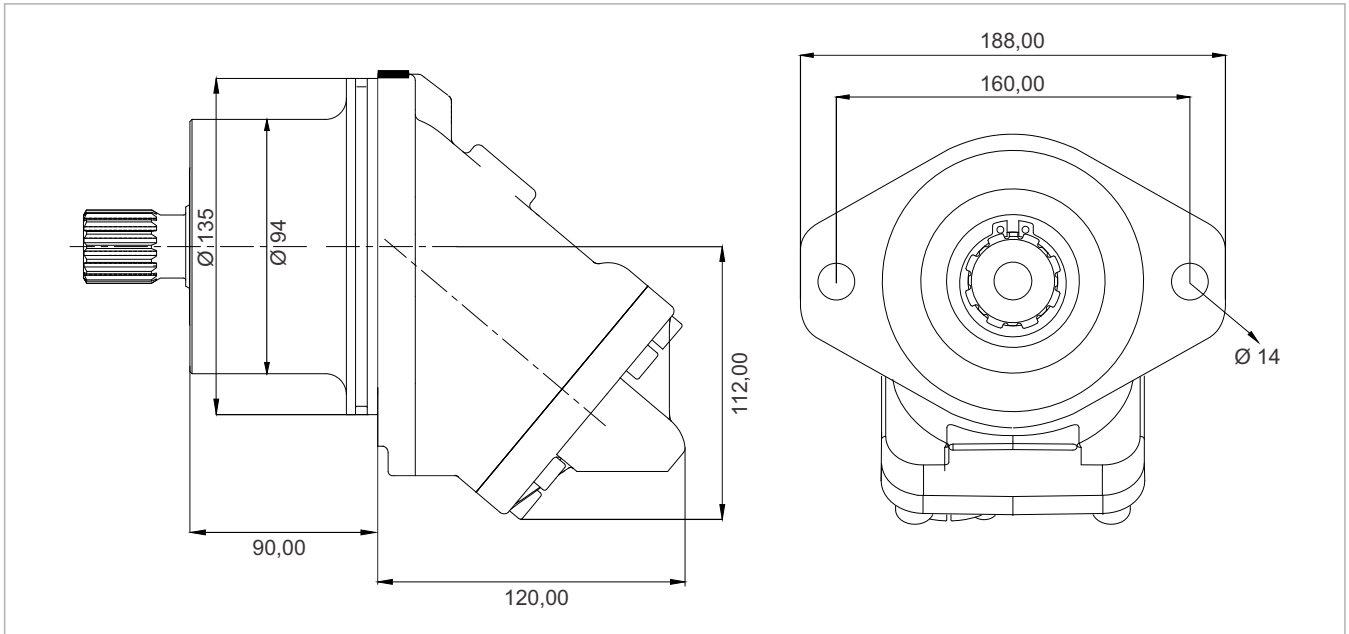


MF

Fixed Plug-in

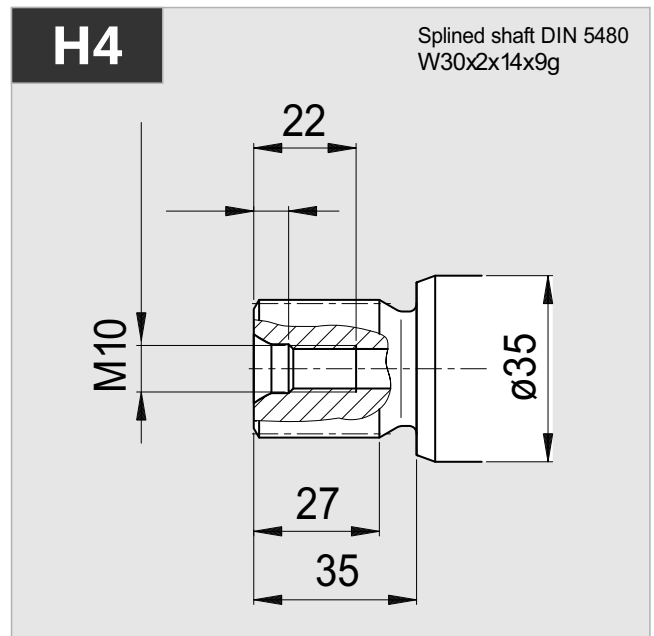
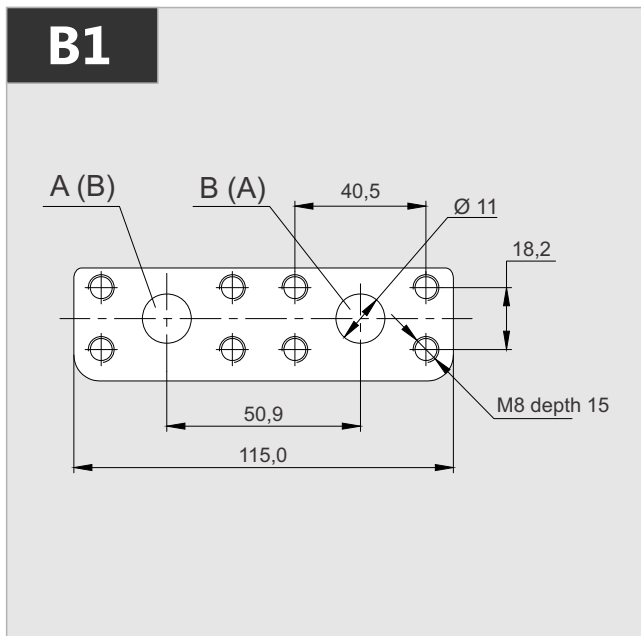
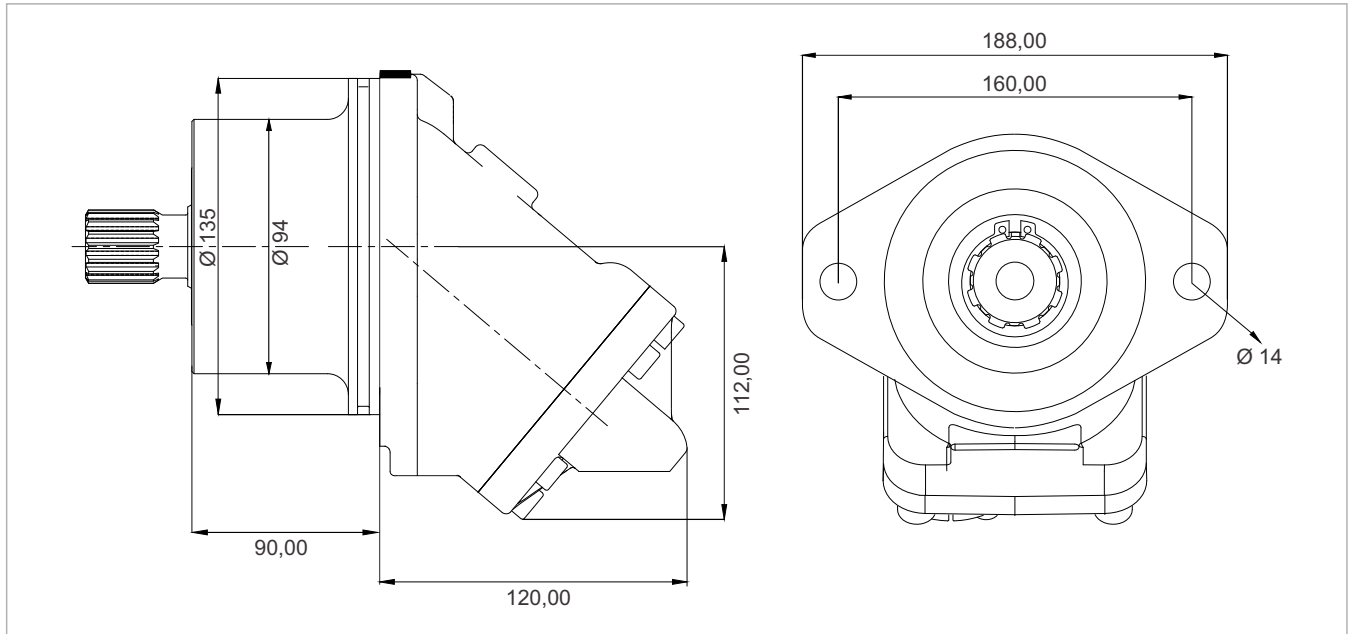
Bent Axis Piston Motors

MF 25



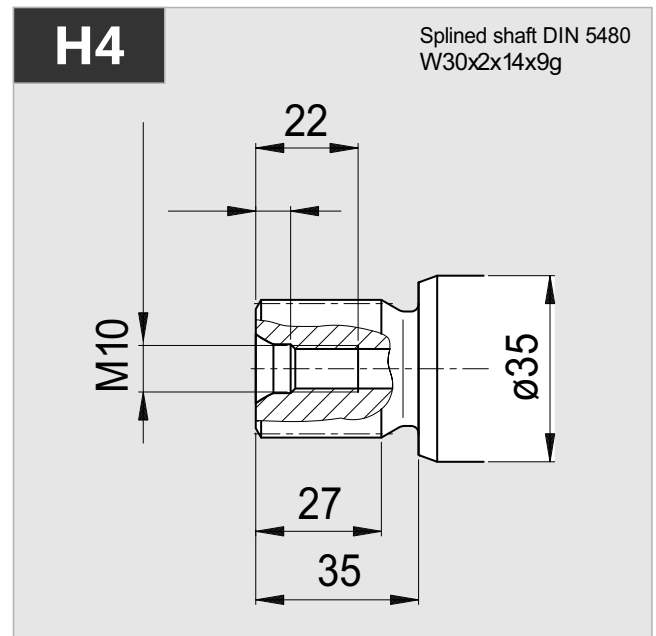
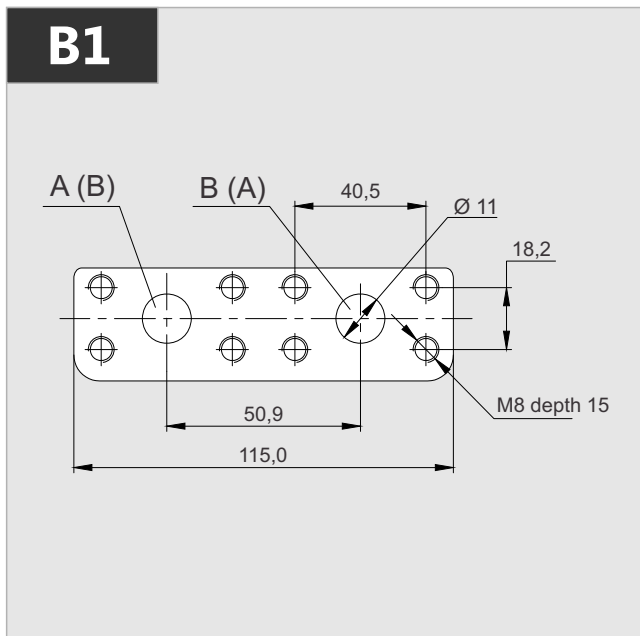
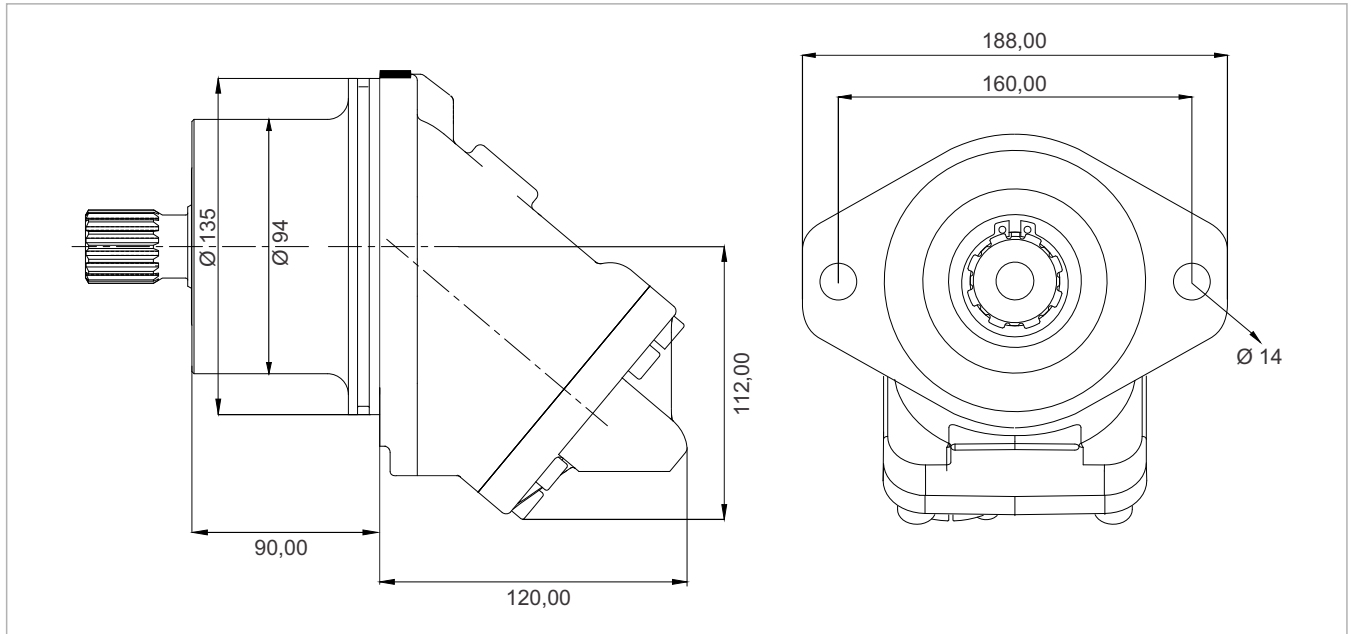
x 1000 rpm	x 1500 rpm	Max. Contin. Pump Speed	Max. Intermit. Pump Speed	Max. Contin. Pressure	Max. Peak Pressure	Torque bar	Torque at 350 bar	Max. Flow	Weight without accessor.	Weight with accessor.	Max. Motor Temp.	Min. Motor Temp.
25,00 cc	37,50 cc	6250 rpm	6800 rpm	400 bar	450 bar	0.40 m.N/bar	140 m.N	156	12,00 kg	12,50 kg	-25°	110°

MF 32



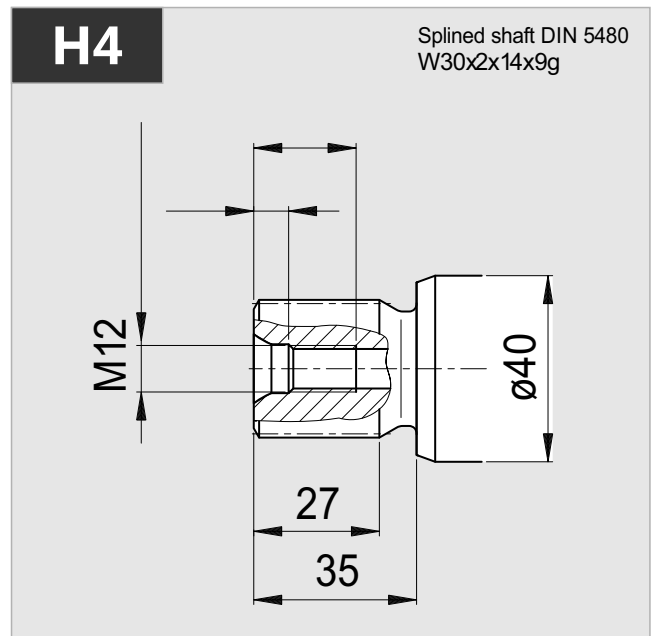
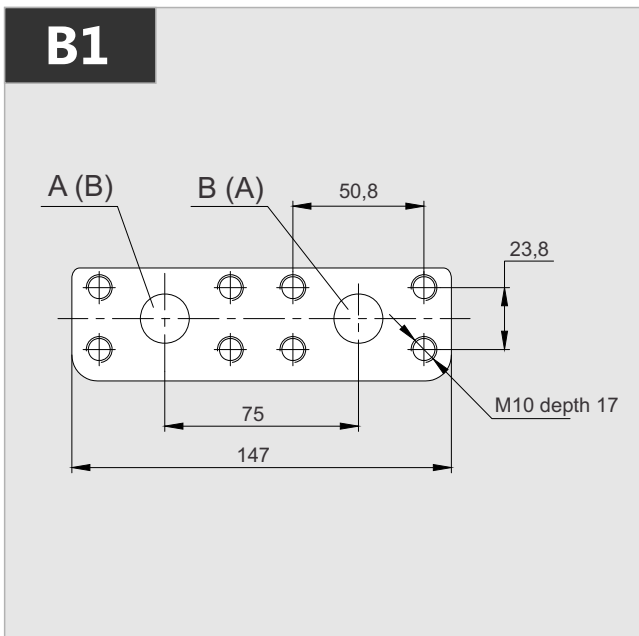
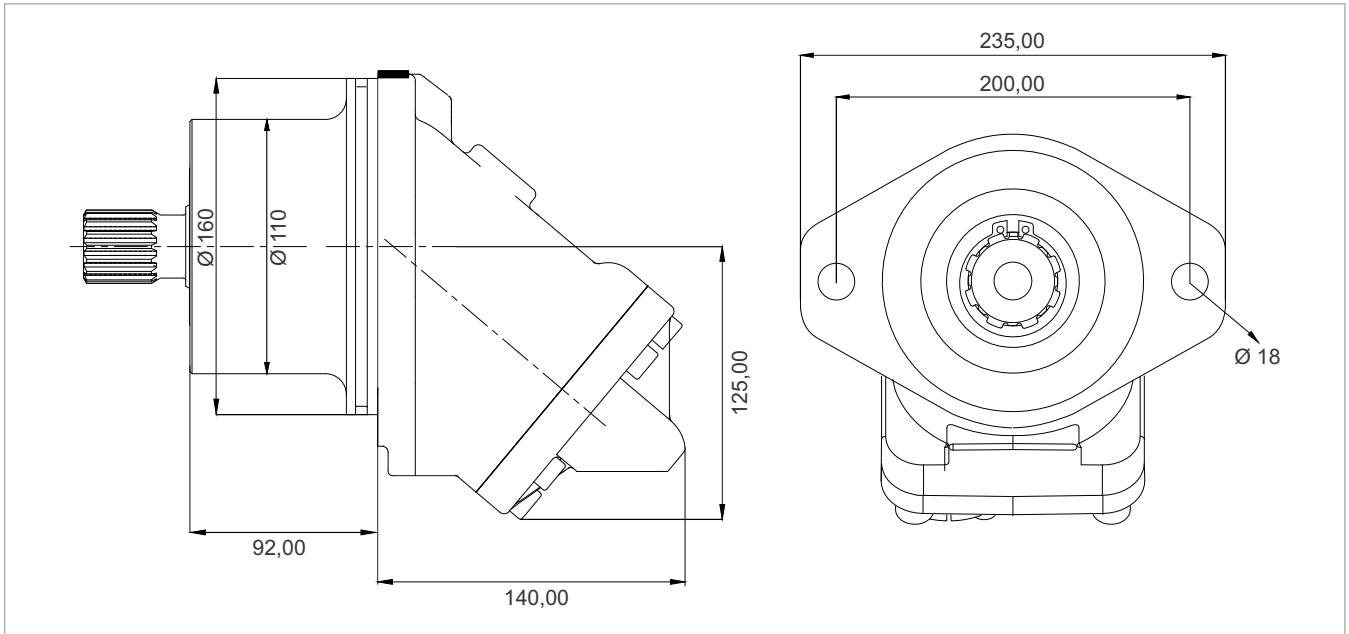
x 1000 rpm	x 1500 rpm	Max. Contin. Pump Speed	Max. Intermit. Pump Speed	Max. Contin. Pressure	Max. Peak Pressure	Torque bar	Torque at 350 bar	Max. Flow	Weight without accessor.	Weight with accessor.	Max. Motor Temp.	Min. Motor Temp.
32,00 cc	48,00 cc	6250 rpm	6800 rpm	400 bar	450 bar	0.51 m.N/bar	174 m.N	200	12,00 kg	12,50 kg	-25°	110°

MF 40



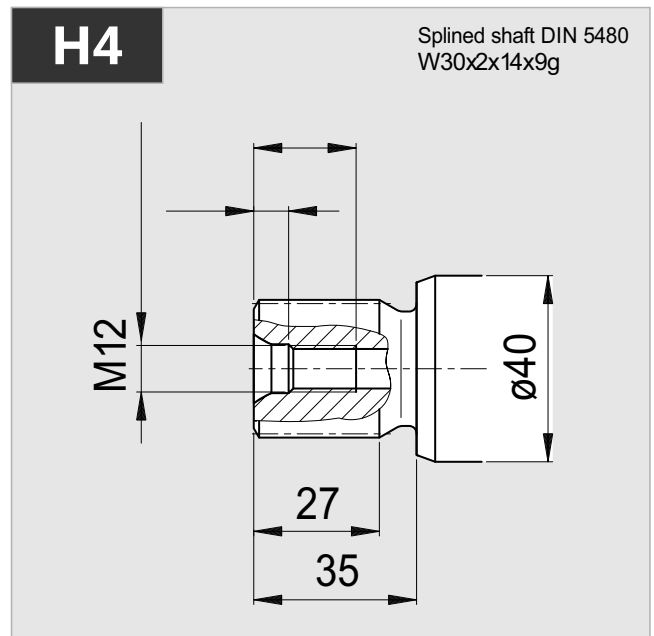
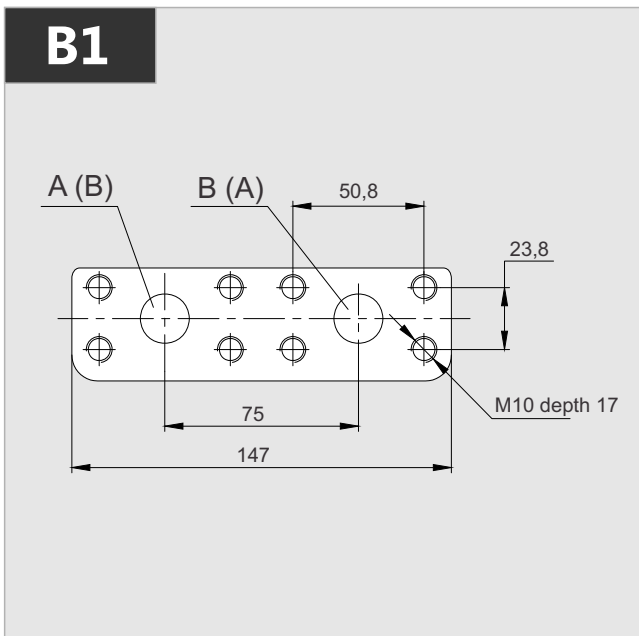
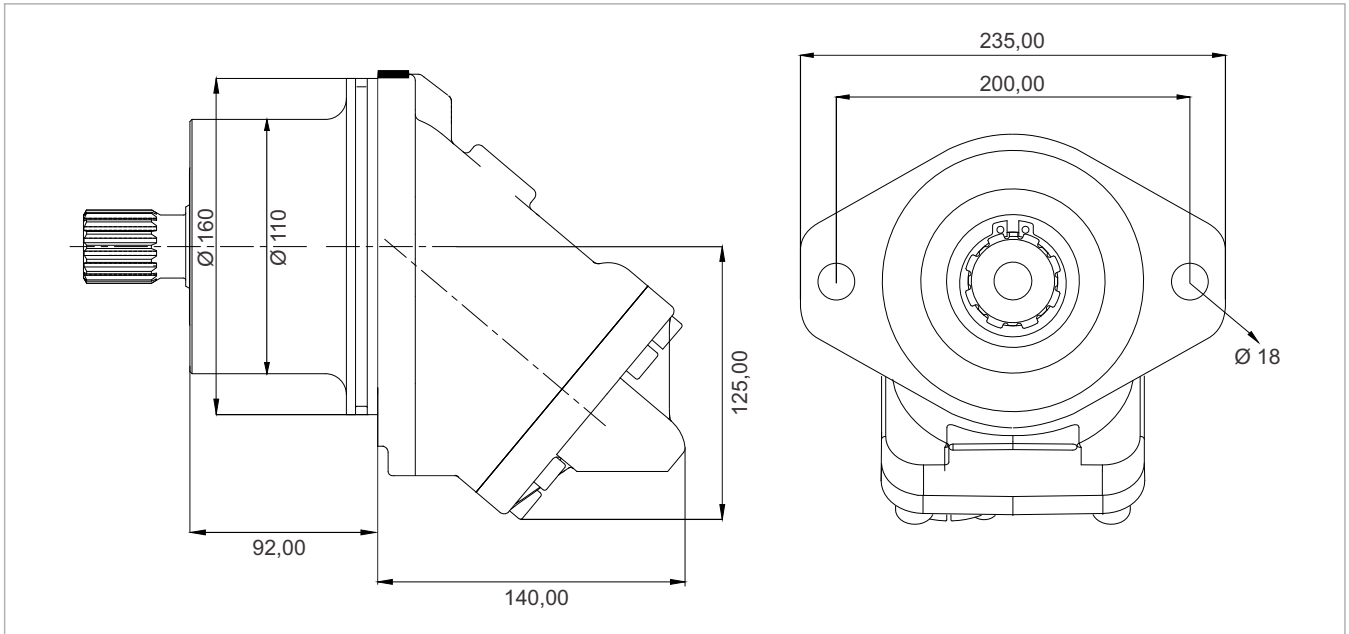
x 1000 rpm	x 1500 rpm	Max. Contin. Pump Speed	Max. Intermit. Pump Speed	Max. Contin. Pressure	Max. Peak Pressure	Torque bar	Torque at 350 bar	Max. Flow	Weight without accessor.	Weight with accessor.	Max. Motor Temp.	Min. Motor Temp.
40,20 cc	60,30 cc	5600 rpm	6300 rpm	400 bar	450 bar	0.68 m.N/bar	228 m.N	225	12,00 kg	12,50 kg	-25°	110°

MF 50



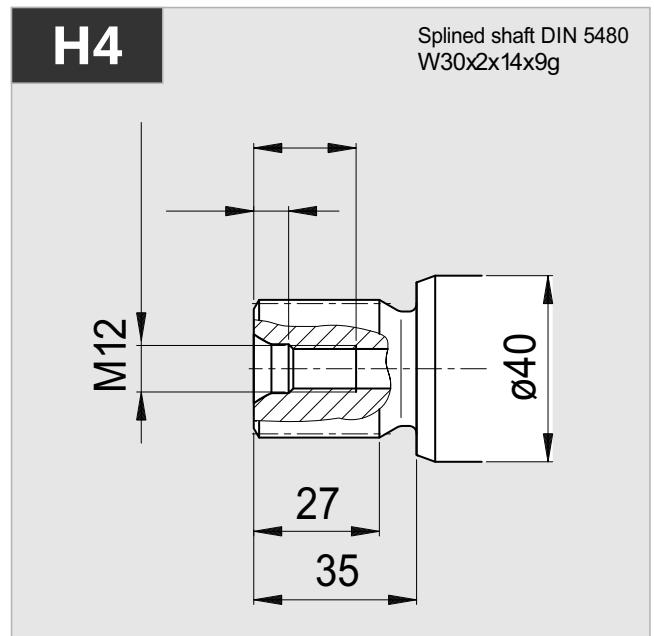
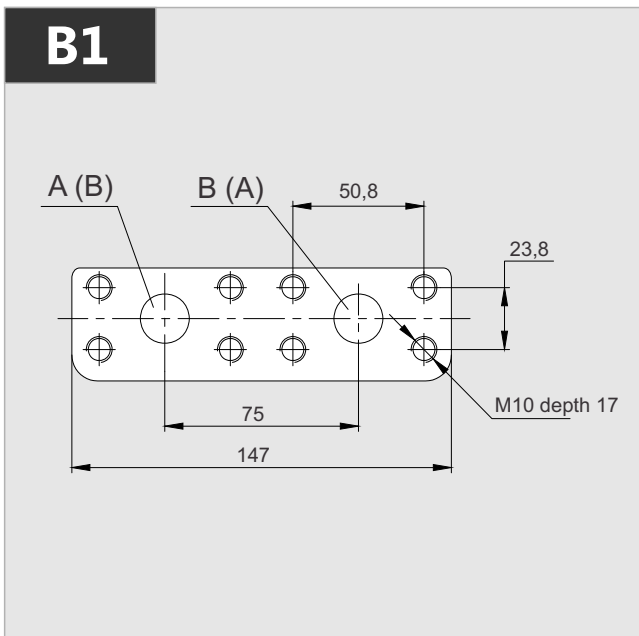
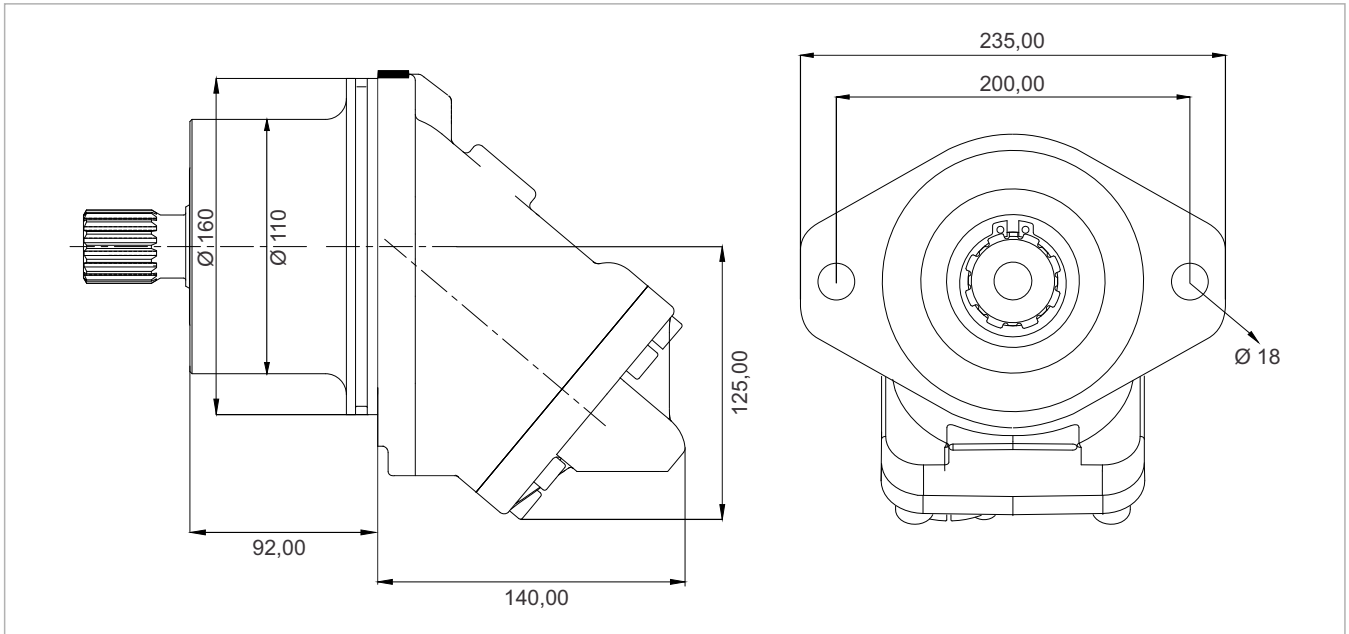
x 1000 rpm	x 1500 rpm	Max. Contin. Pump Speed	Max. Intermit. Pump Speed	Max. Contin. Pressure	Max. Peak Pressure	Torque bar	Torque at 350 bar	Max. Flow	Weight without accessor.	Weight with accessor.	Max. Motor Temp.	Min. Motor Temp.
50,00 cc	75,00 cc	5000 rpm	5500 rpm	400 bar	450 bar	0.80 m.N/bar	280 m.N	250	18,50 kg	19,00 kg	-25°	110°

MF 56



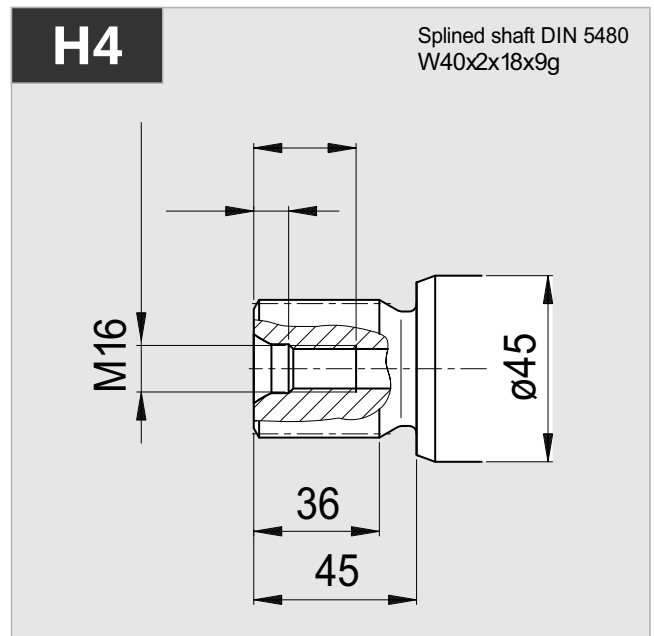
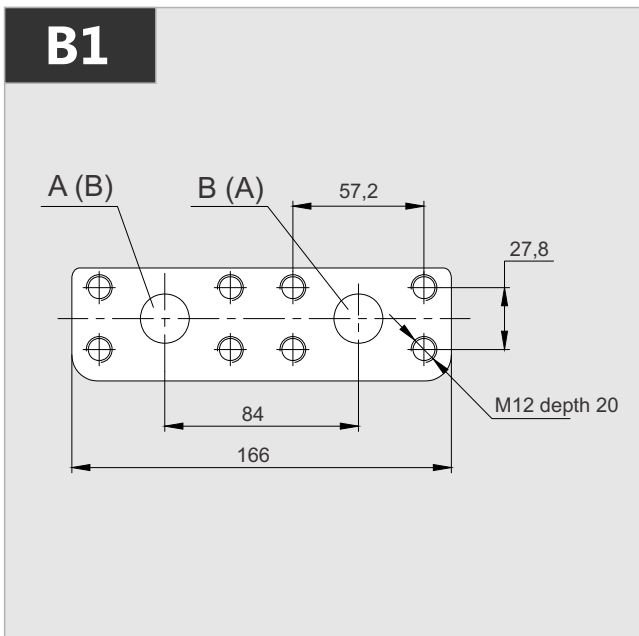
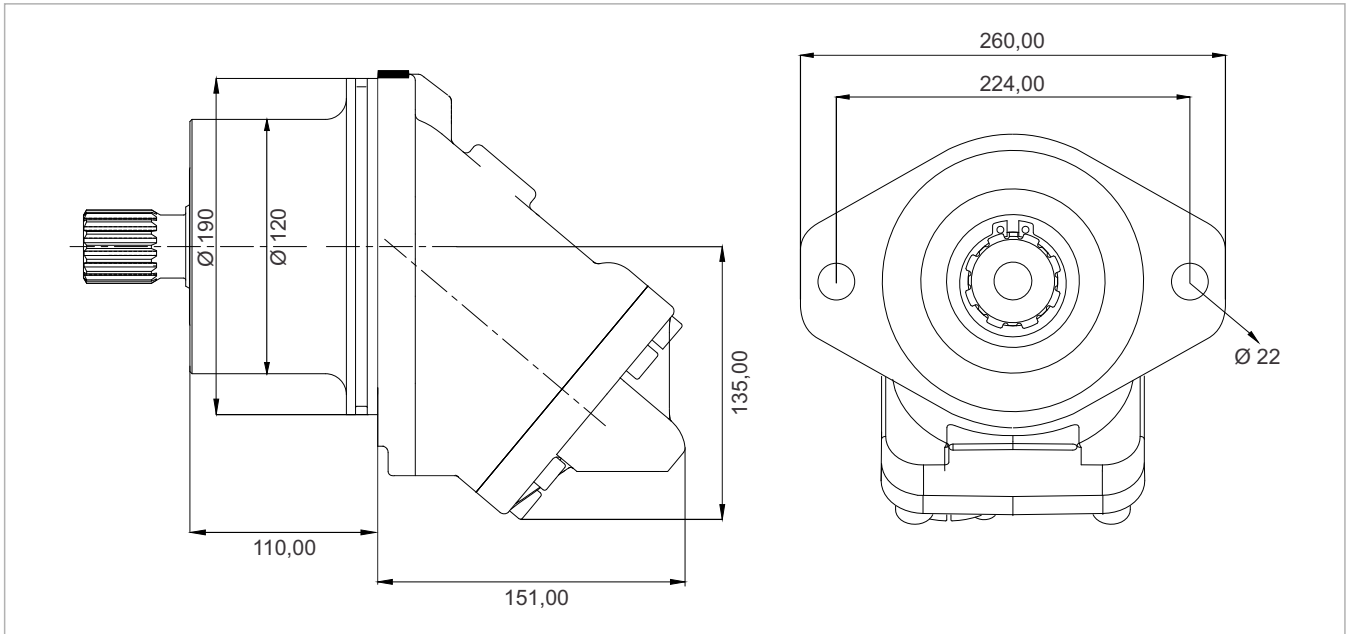
x 1000 rpm	x 1500 rpm	Max. Contin. Pump Speed	Max. Intermit. Pump Speed	Max. Contin. Pressure	Max. Peak Pressure	Torque bar	Torque at 350 bar	Max. Flow	Weight without accessor.	Weight with accessor.	Max. Motor Temp.	Min. Motor Temp.
56,40 cc	84,60 cc	5000 rpm	5500 rpm	400 bar	450 bar	0.92 m.N/bar	320 m.N	282	18,50 kg	19,00 kg	-25°	110°

MF 63



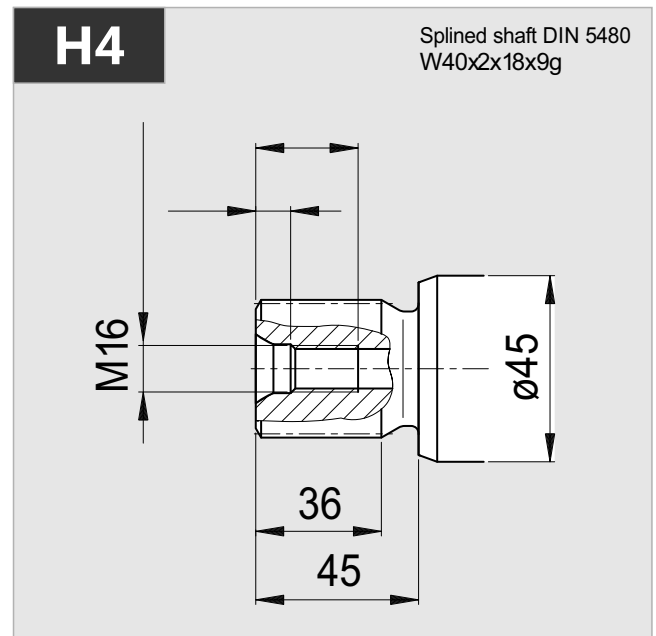
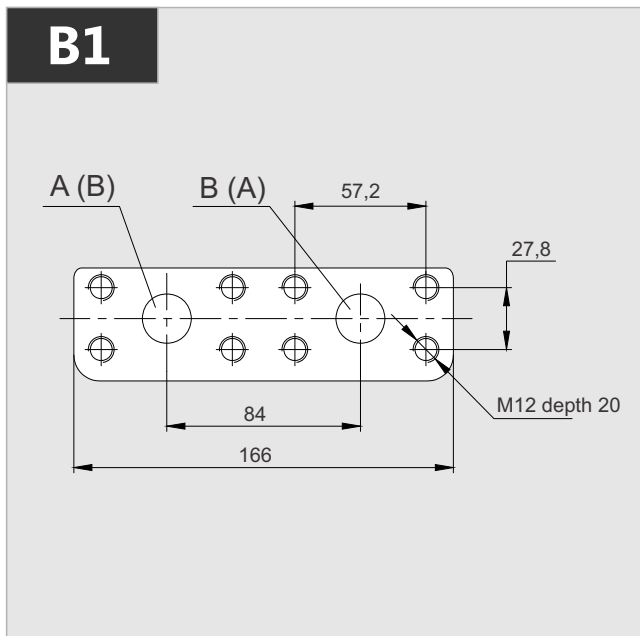
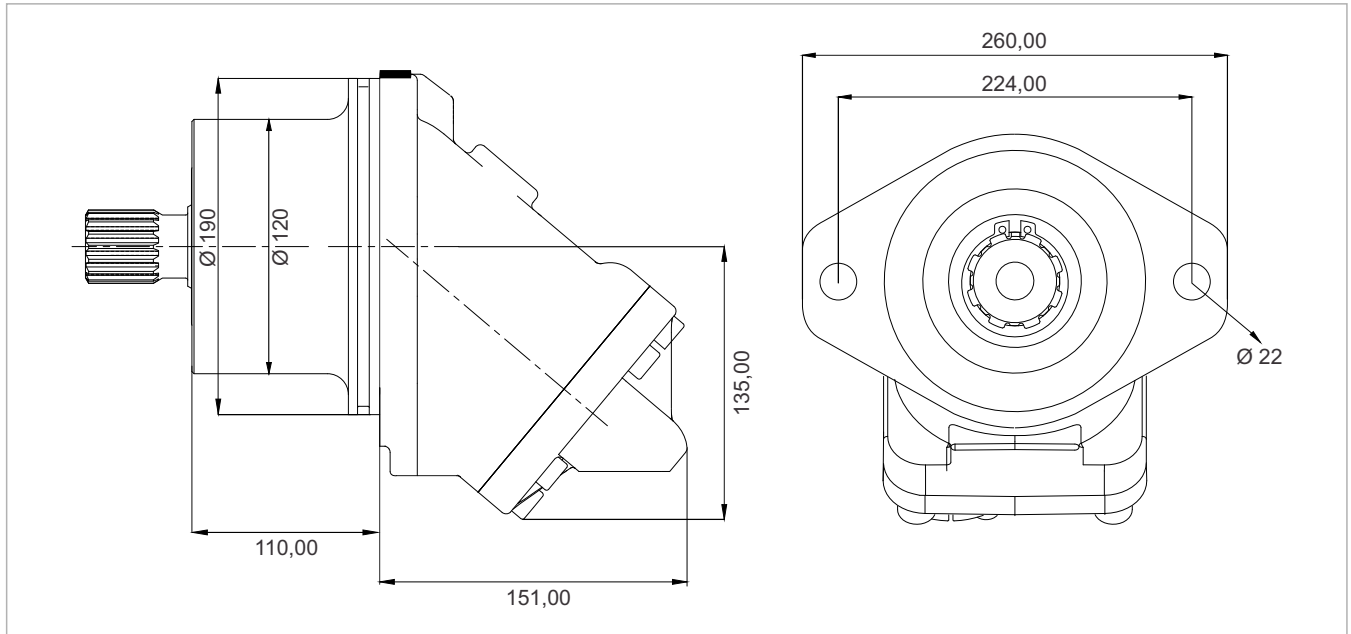
x 1000 rpm	x 1500 rpm	Max. Contin. Pump Speed	Max. Intermit. Pump Speed	Max. Contin. Pressure	Max. Peak Pressure	Torque bar	Torque at 350 bar	Max. Flow	Weight without accessor.	Weight with accessor.	Max. Motor Temp.	Min. Motor Temp.
63,00 cc	94,50 cc	5000 rpm	5500 rpm	400 bar	450 bar	1.00 m.N/bar	350 m.N	315	18,50 kg	19,00 kg	-25°	110°

MF 80



x 1000 rpm	x 1500 rpm	Max. Contin. Pump Speed	Max. Intermit. Pump Speed	Max. Contin. Pressure	Max. Peak Pressure	Torque bar	Torque at 350 bar	Max. Flow	Weight without accessor.	Weight with accessor.	Max. Motor Temp.	Min. Motor Temp.
80,00 cc	120,00 cc	4400 rpm	4900 rpm	400 bar	450 bar	1.28 m.N/bar	440 m.N	352	25,50 kg	26,00 kg	-25°	110°

MF 108



x 1000 rpm	x 1500 rpm	Max. Contin. Pump Speed	Max. Intermit. Pump Speed	Max. Contin. Pressure	Max. Peak Pressure	Torque bar	Torque at 350 bar	Max. Flow	Weight without accessor.	Weight with accessor.	Max. Motor Temp.	Min. Motor Temp.
108,4 cc	162,6 cc	4000 rpm	4400 rpm	400 bar	450 bar	1.69 m.N/bar	600 m.N	433	25,50 kg	26,00 kg	-25°	110°

Special Shaft Drive

35xf7x2x9g
ГОСТ6033

A8x7x50
DIN6885

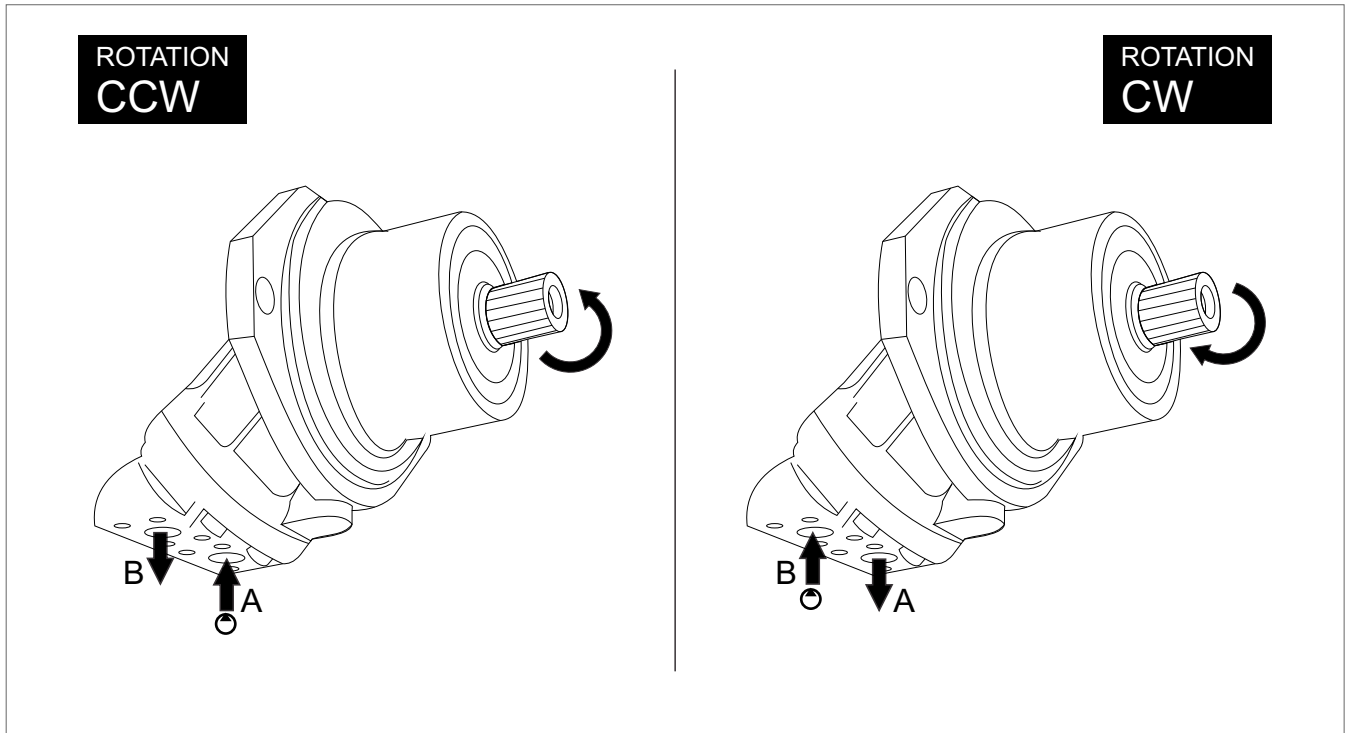
A10x5x50
DIN6885

45xh8x2x9g
ГОСТ6033

A12x8x63
DIN6885

A14x9x63
DIN6885

Direction of Rotation



Quick Calculation

Flow rate

$$Q = \frac{V_s \cdot n}{1000 \eta_v} \text{ (lpm)}$$

Torque

$$M = \frac{V_s \cdot \Delta p \cdot \eta_{mh}}{63} \text{ (Nm)}$$

Power

$$P = \frac{2\pi \cdot M \cdot n}{60000} = \frac{M \cdot n}{9549} = \frac{Q \cdot \Delta p \cdot \eta_t}{600} \text{ (kw)}$$

Speed

$$n = \frac{1000 \cdot Q \cdot \eta_v}{V_s} \text{ (rpm)}$$

V_s = Displacement (ccm/rev.)

Δp = Diff. pressure (bar)

n = Speed (rpm)

Q = Flow (lpm)

η_v = Volumetric efficiency

η_{mh} = Mechanical-hydraulic efficiency

η_t = Total efficiency ($\eta_t = \eta_v \times \eta_{mh}$)

Address all questions regarding spare parts to your responsible Our Service Partner or the technical service department of the manufacture's plant / factory for the MF Bent Axis Motors.

Installation

POSITION

MF Motors can be operate any position.

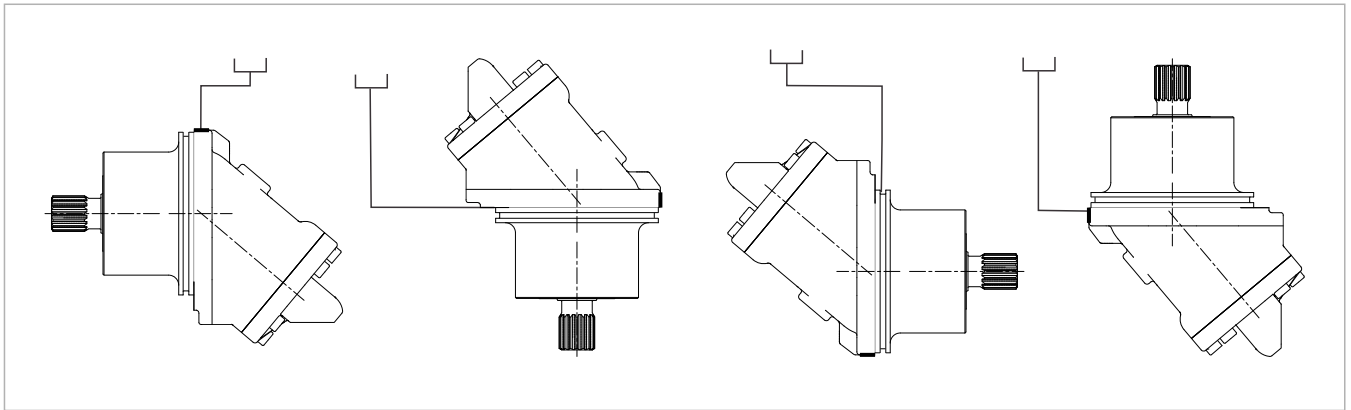
DIRECTION OF ROTATION

MF Motors can be operate in both directions of rotation.

Before of Installation operation, the motor must be filled with hydraulic fluid and air bled.

INSTALLATION POSITION

See following examples.

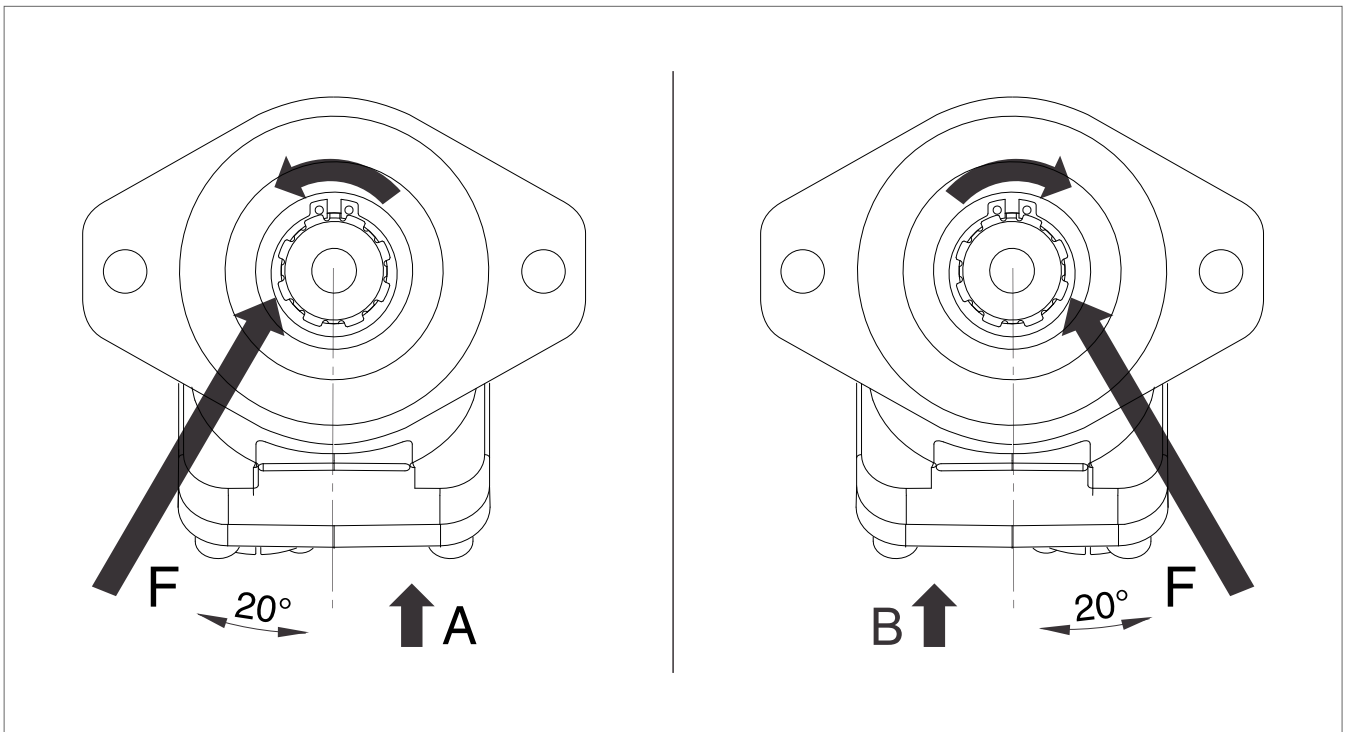


HYDRAULIC FLUID

Recommended ;

Generally : between 15 and 200 cSt.

Maximum : between 5 and 1600 cSt.



FOR USE;

Available via e-mail on request or each motor is supplied via Starting datasheet.

For detailed information about MF Bent Axis Motors, please contact with Technical Department !!!

SAFA

HYDRAULICS



PD-DIN
Bent Axis Pumps



MD-DIN
Bent Axis Motor



PA-SAE
Bent Axis Pumps



MA-SAE
Bent Axis Motor



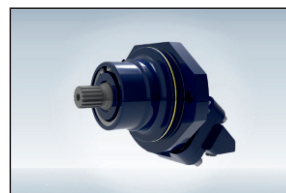
PS-ISO
Bent Axis Pumps



MS-ISO
Bent Axis Motor



PD Dual
Dual Flow Pumps



MF Fixed
Bent Axis Motor



PV
Variable Disp.
Piston Pumps

SAFA HYDRAULICS

ADDRESS:

Fevzi akmak Mahallesi 10465. Sk. Karatay | Konya / Turkey

TELEPHONE:

+90 332 342 10 21, +90 534 234 63 89, +90 539 592 71 71

FAX:

+90 332 342 45 71

E-MAIL:

info@safahydraulic.com

www.safahydraulic.com

In 6 Continents, 58 Countries Fevzi akmak Mh. 10465. Sk. Karatay +90 332 342 10 21



SAFA
HYDRAULICS

Home

About Us

Pumps & Motors

Catalogs

Applications

Quality

Contact Us



CONTACT US

Home | Contact Us

Contact Us

Contact with SAFA Hydraulics



info@safahydraulic.com

www.safahydraulic.com