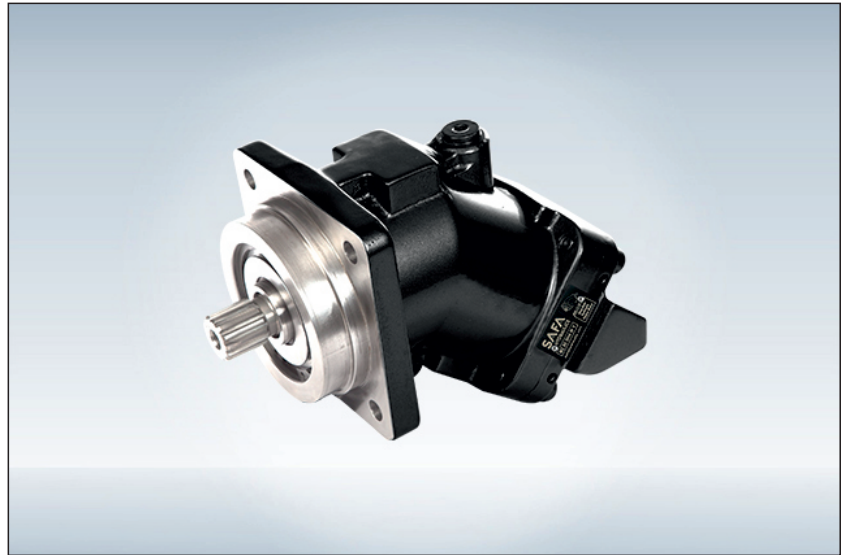


PS-ISO Bent Axis Pumps

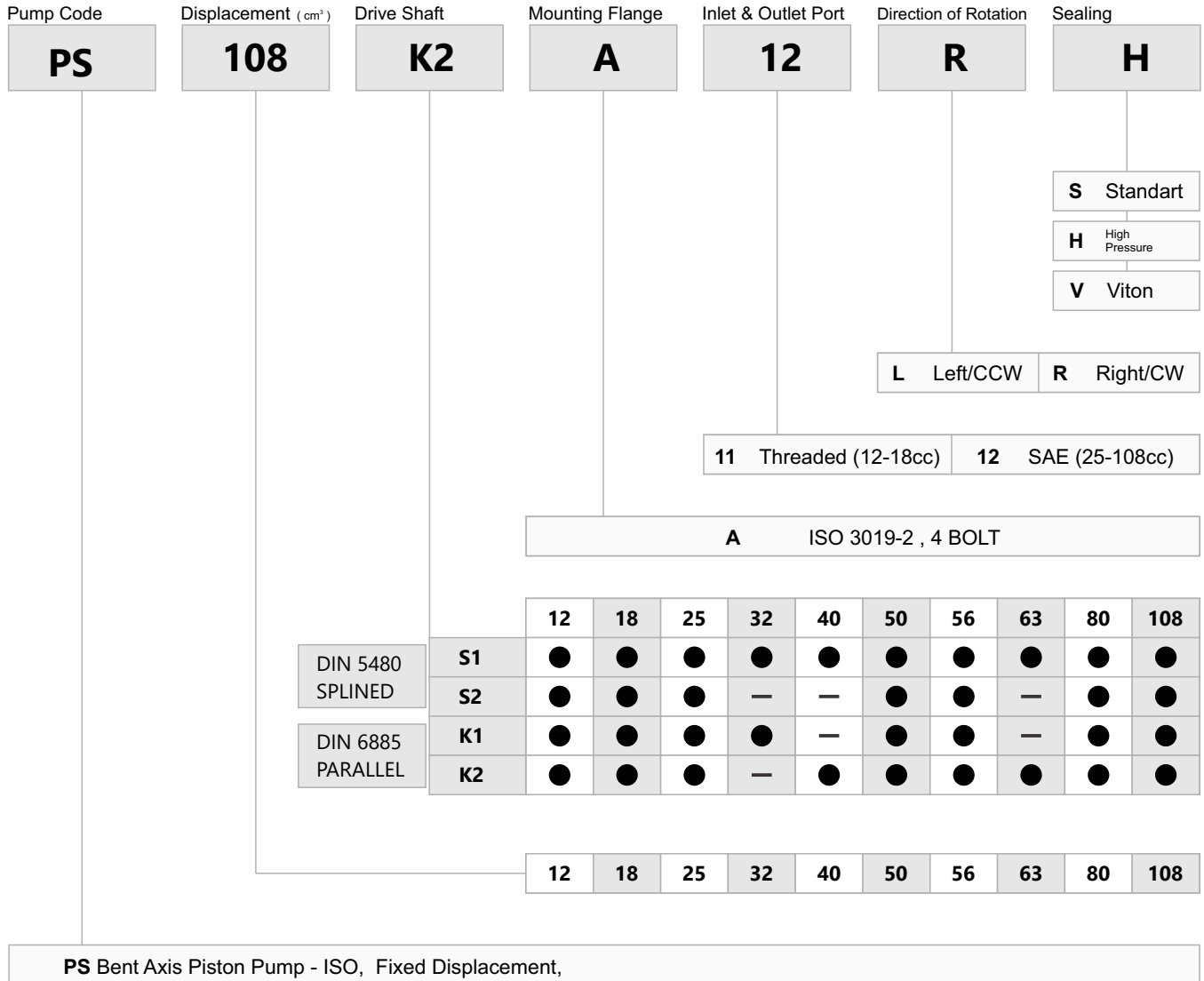


ISO Mounting Flange, Flange, 4 Bolt, 12cc to 130cc

ISO Mounting Flange, High Pressure Bent Axis Piston Pumps.
Displacement Range starting at; 12cc, 18cc, 25cc, 32cc, 40cc, 50cc, 63cc, 80cc, 108cc, 130cc
High Rotational Speed, High Pressure, Slim Design, High Efficiency.



Ordering Code of PS Pumps



Technical Data

		12	18	25	32	40	50	56	63	80	108
Displacement	cc	12,00	18,00	25,00	32,00	40,20	50,00	56,40	63,00	80,00	108,4
Theoretical oil flow l/min at pump speed	1000 rpm	12,00	18,00	25,00	32,00	40,20	50,00	56,40	63,00	80,00	108,4
	1500 rpm	18,00	27,00	37,50	48,00	60,30	75,00	84,60	94,50	120,0	162,6
Maximum Pump Speed											
- Continuous	rpm	3100	3100	2500	2500	2300	2300	2300	2300	2300	2000
Max. Continuous Pressure	bar	400	400	400	400	400	400	400	400	400	400
Max. Peak Pressure	bar	450	450	450	450	450	450	450	450	450	450
Max. Torque at 350 bar	Nm	66	98	141	174	225	280	320	350	445	600
Max. Flow	l/min.	37,20	55,80	62,50	80,00	92,46	115,0	129,7	144,9	184,0	216,0
Pump Temperature											
- Minimum	°C	-25	-25	-25	-25	-25	-25	-25	-25	-25	-25
- Maximum	°C	110	110	110	110	110	110	110	110	110	110
Weight											
- Without accessories	kg	6,00	6,00	11,50	11,50	11,50	17,50	18,00	18,00	22,00	22,50
- With accessories	kg	6,20	6,20	11,80	11,90	11,90	18,00	18,50	18,50	22,50	23,00
Rotation		CW,CCW	CW,CCW	CW,CCW	CW,CCW	CW,CCW	CW,CCW	CW,CCW	CW,CCW	CW,CCW	CW,CCW

Quick Calculation

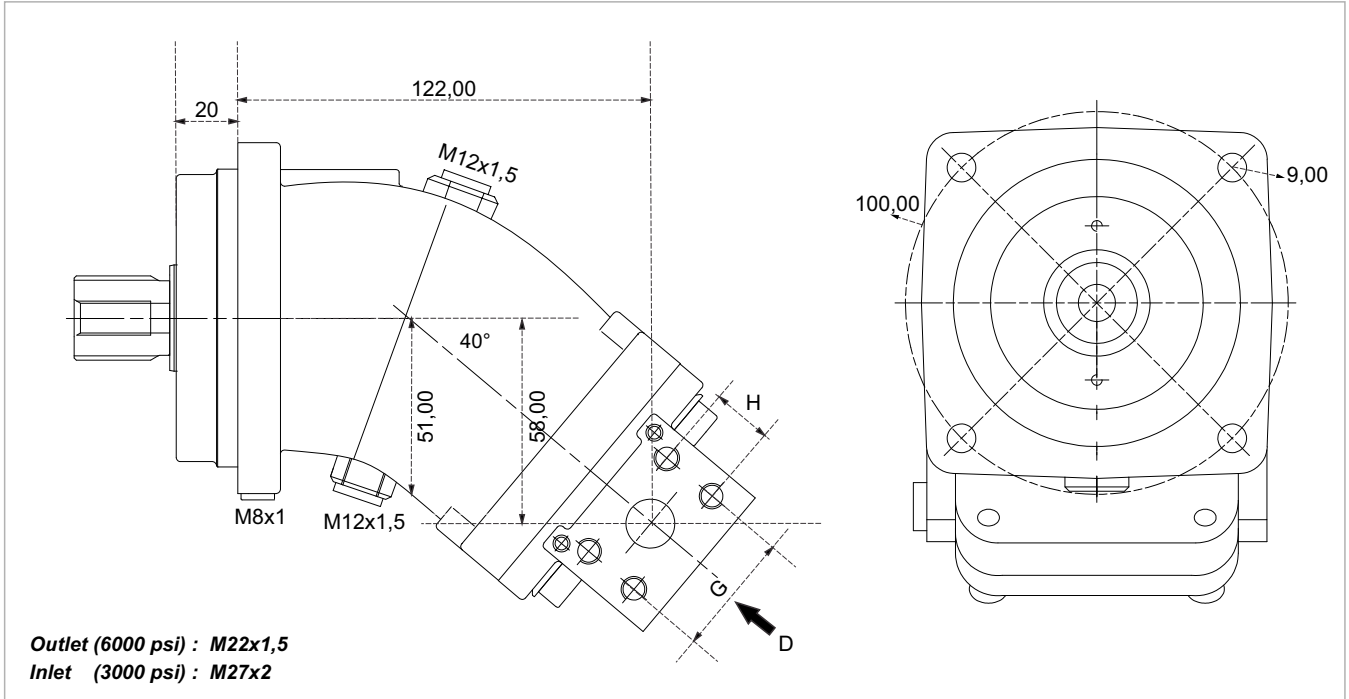
$$\text{Flow } Q = \frac{V_g \cdot n \cdot \eta_v}{1000} \quad \text{l/min}$$

$$\text{Torque } T = \frac{V_g \cdot \Delta P}{20 \cdot \pi \cdot \eta_{mh}} \quad \text{N}\cdot\text{m}$$

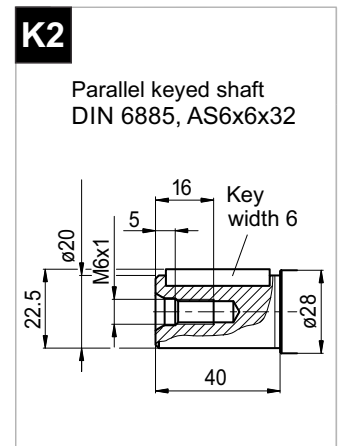
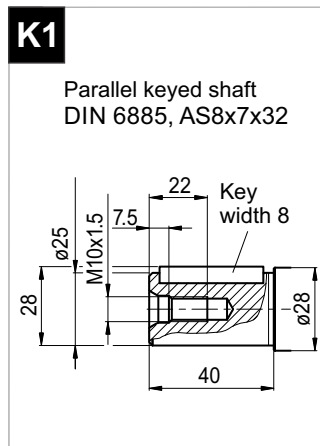
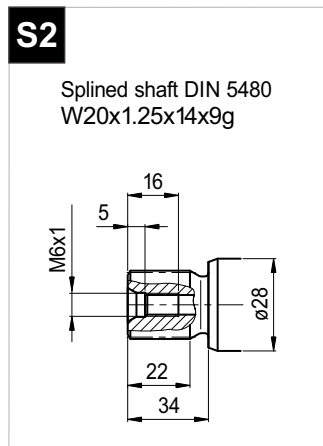
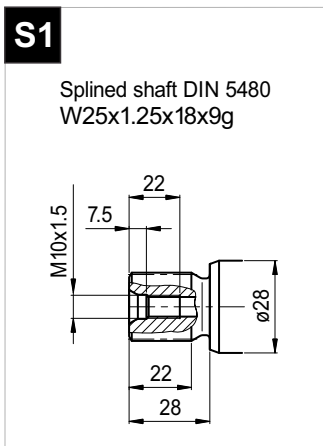
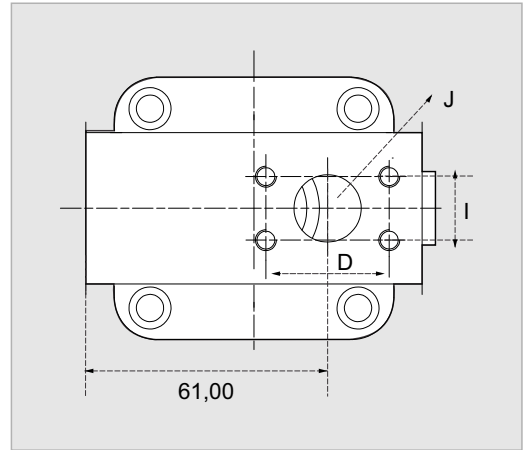
$$\text{Power } N = \frac{Q \cdot \Delta P}{612 \cdot \eta_t} \quad \text{kW}$$

- Q – flow, l/min
- T – torque, N•m
- N – power, kW
- V_g – displacement, ccm/rev
- n – shaft speed, rpm
- ΔP – pressure difference, bar
- η_v – volume efficiency
- η_{mh} – hydraulic mechanical efficiency
- $\eta_t = \eta_v \cdot \eta_{mh}$ – full efficiency coefficient

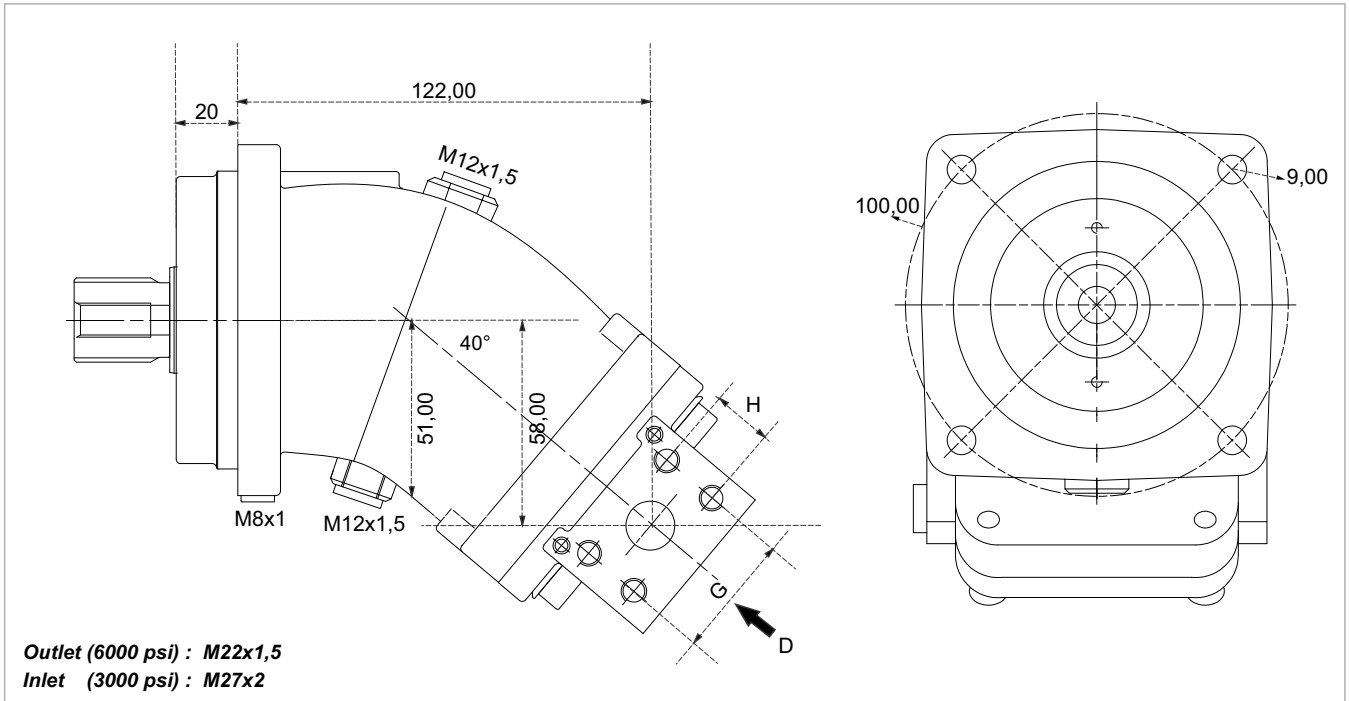
PS 12



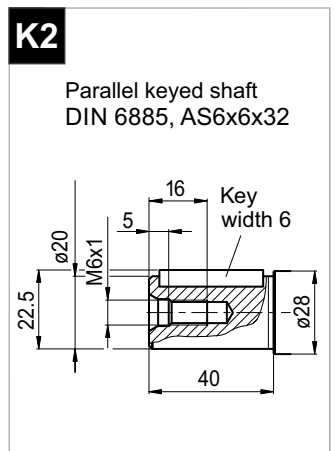
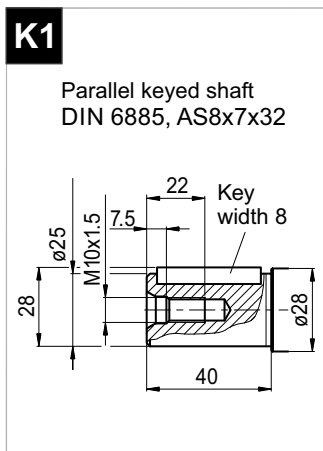
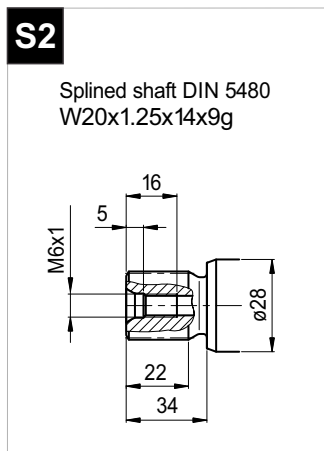
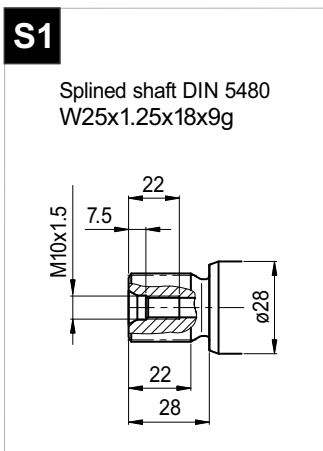
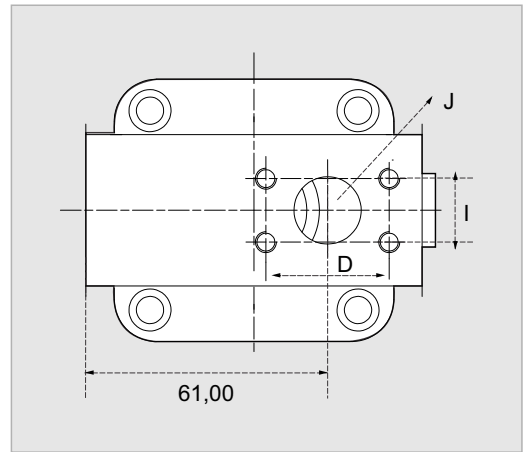
x 1000 rpm	12,00 cc
x 1500 rpm	18,00 cc
Max. Continuous Pump Speed	3100 rpm
Max. Continuous Pressure	400 bar
Max. Peak Pressure	450 bar
Max. Torque at 350 bar	66 Nm
Max. Flow	37,20 l/min.
Min. Pump Temperature	-25 °C
Max. Pump Temperature	110 °C
Weight without accessories	6,00 kg
Weight with accessories	6,20 kg
Rotation	CW-CCW



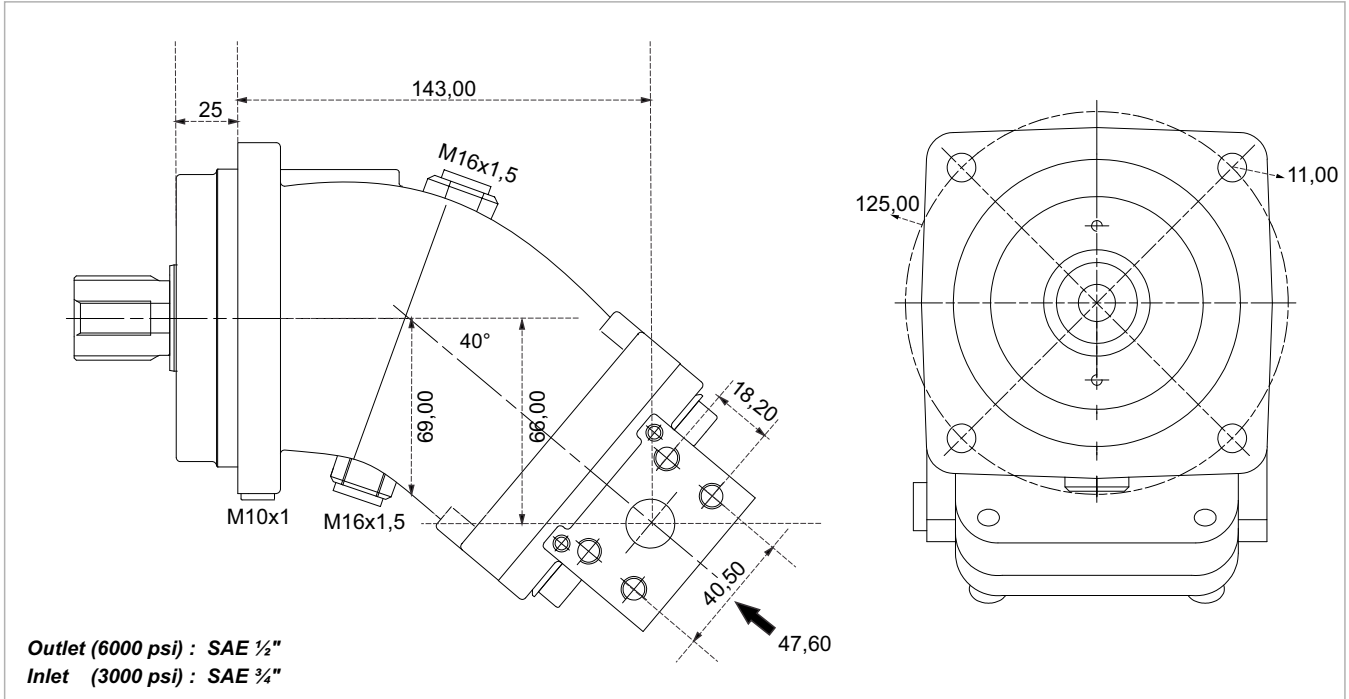
PS 18



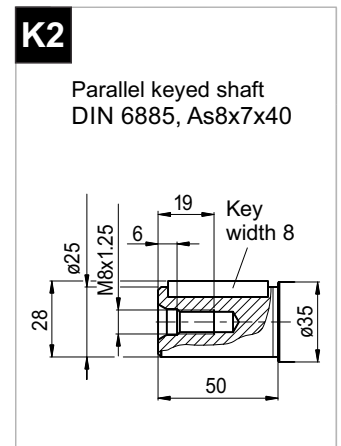
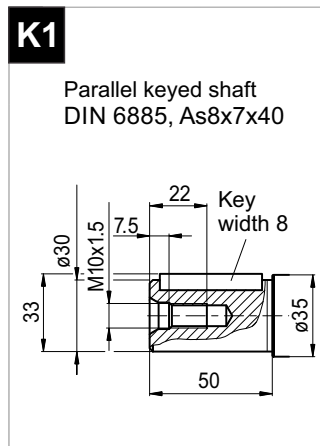
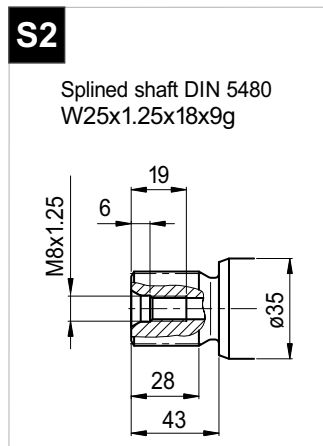
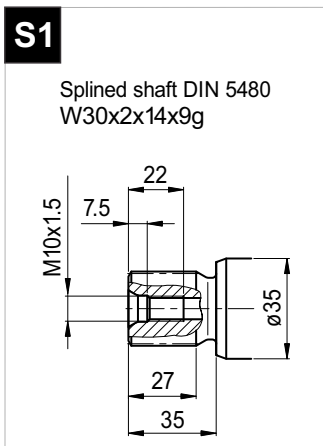
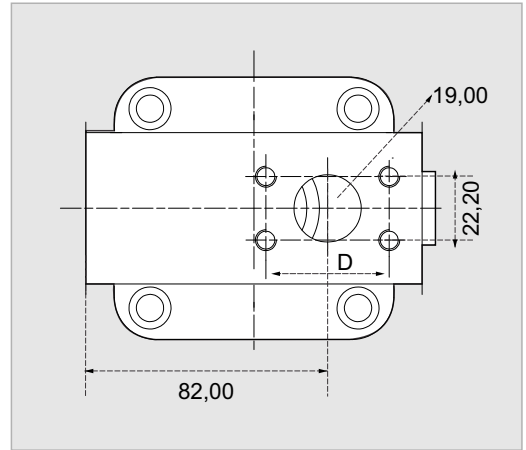
x 1000 rpm	18,00 cc
x 1500 rpm	27,00 cc
Max. Continuous Pump Speed	3100 rpm
Max. Continuous Pressure	400 bar
Max. Peak Pressure	450 bar
Max. Torque at 350 bar	98 Nm
Max. Flow	55,80 l/min.
Min. Pump Temperature	-25 °C
Max. Pump Temperature	110 °C
Weight without accessories	6,00 kg
Weight with accessories	6,20 kg
Rotation	CW-CCW



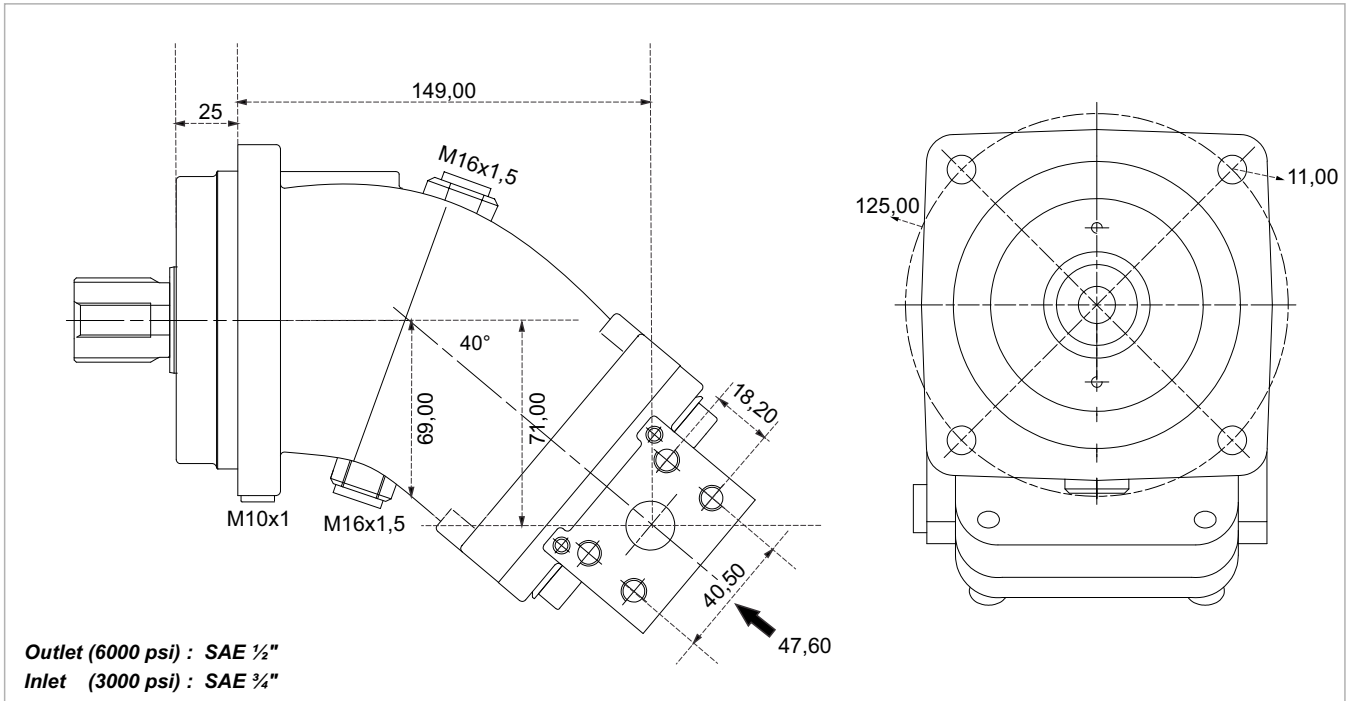
PS 25



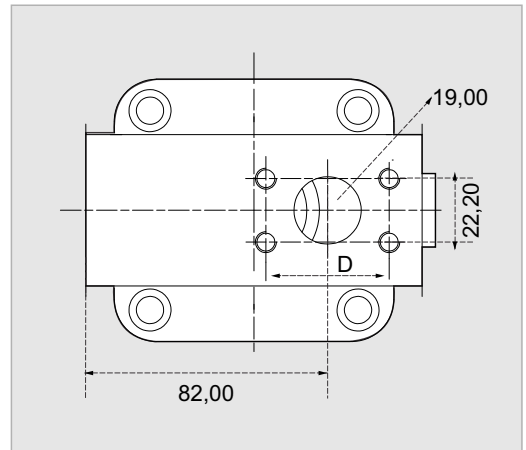
x 1000 rpm	25,00 cc
x 1500 rpm	37,50 cc
Max. Continuous Pump Speed	2500 rpm
Max. Continuous Pressure	400 bar
Max. Peak Pressure	450 bar
Max. Torque at 350 bar	141 Nm
Max. Flow	62,50 l/min.
Min. Pump Temperature	-25 °C
Max. Pump Temperature	110 °C
Weight without accessories	11,50 kg
Weight with accessories	11,80 kg
Rotation	CW-CCW



PS 32

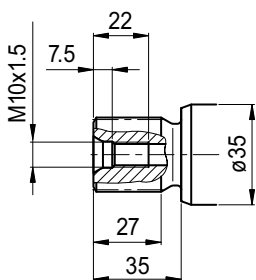


x 1000 rpm	32,00 cc
x 1500 rpm	48,00 cc
Max. Continuous Pump Speed	2500 rpm
Max. Continuous Pressure	400 bar
Max. Peak Pressure	450 bar
Max. Torque at 350 bar	174 Nm
Max. Flow	80,00 l/min.
Min. Pump Temperature	-25 °C
Max. Pump Temperature	110 °C
Weight without accessories	11,50 kg
Weight with accessories	11,90 kg
Rotation	CW-CCW



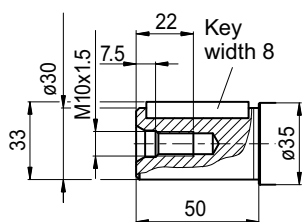
S1

Splined shaft DIN 5480
 W30x2x14x9g

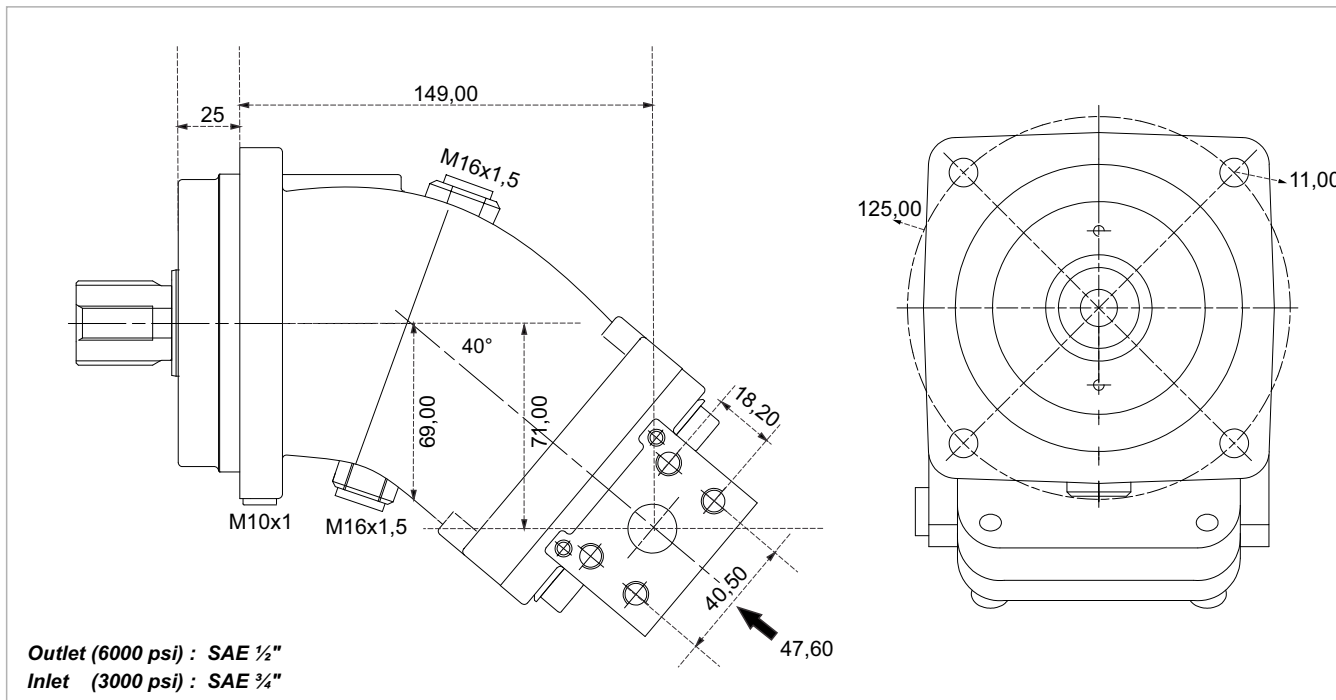


K1

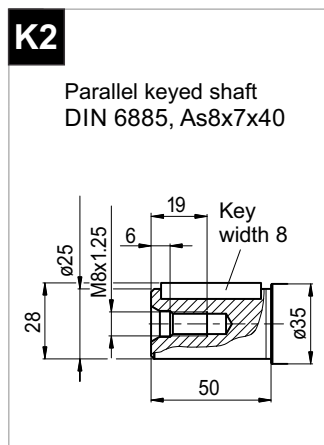
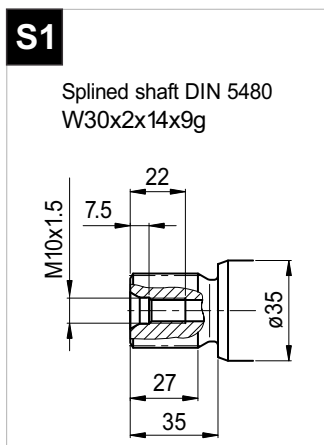
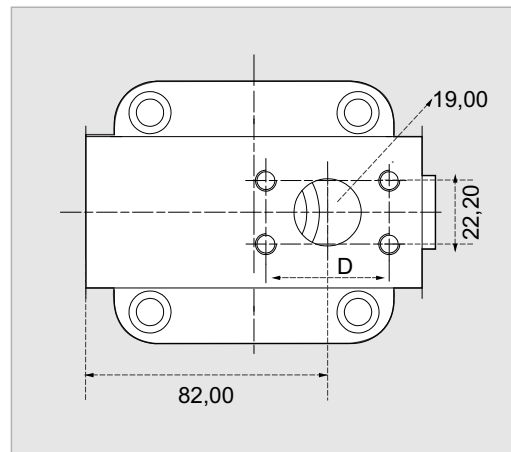
Parallel keyed shaft
 DIN 6885, As8x7x40



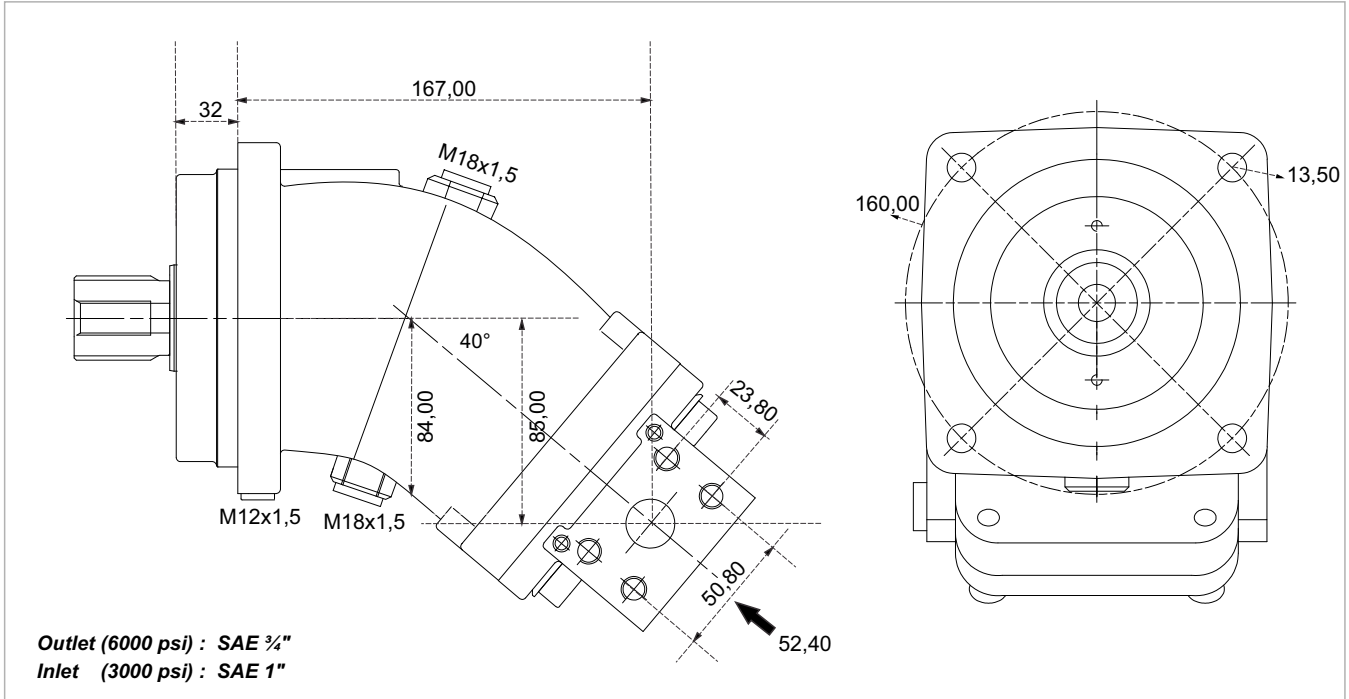
PS 40



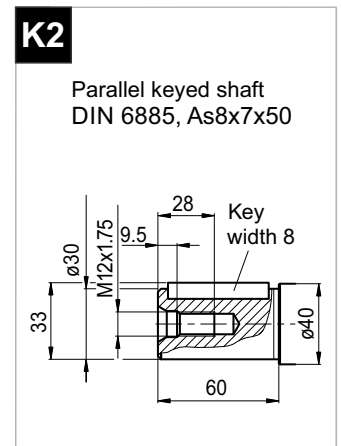
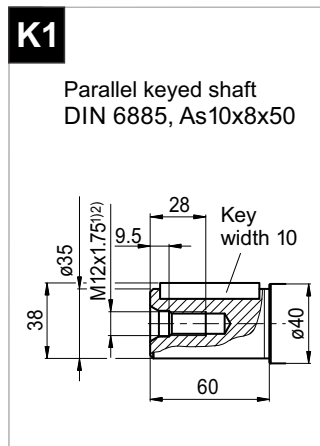
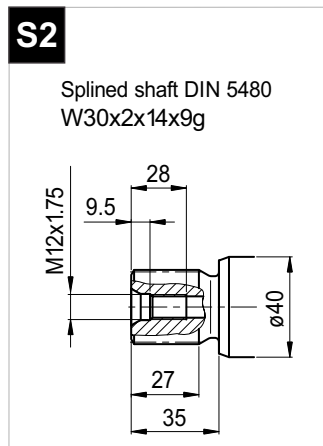
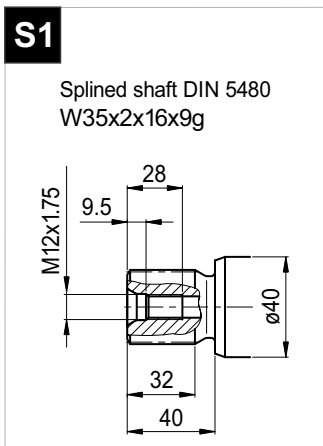
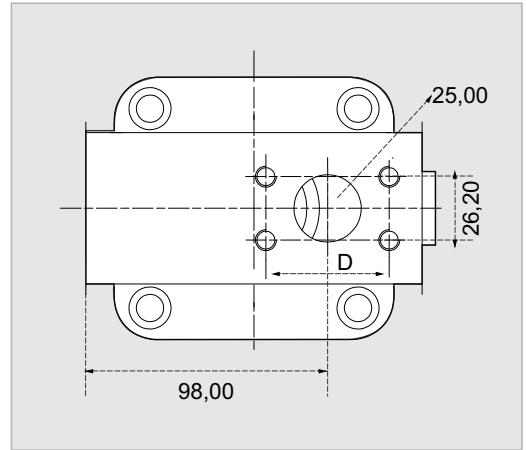
x 1000 rpm	40,20 cc
x 1500 rpm	60,30 cc
Max. Continuous Pump Speed	2300 rpm
Max. Continuous Pressure	400 bar
Max. Peak Pressure	450 bar
Max. Torque at 350 bar	225 Nm
Max. Flow	92,46 l/min.
Min. Pump Temperature	-25 °C
Max. Pump Temperature	110 °C
Weight without accessories	11,50 kg
Weight with accessories	11,90 kg
Rotation	CW-CCW



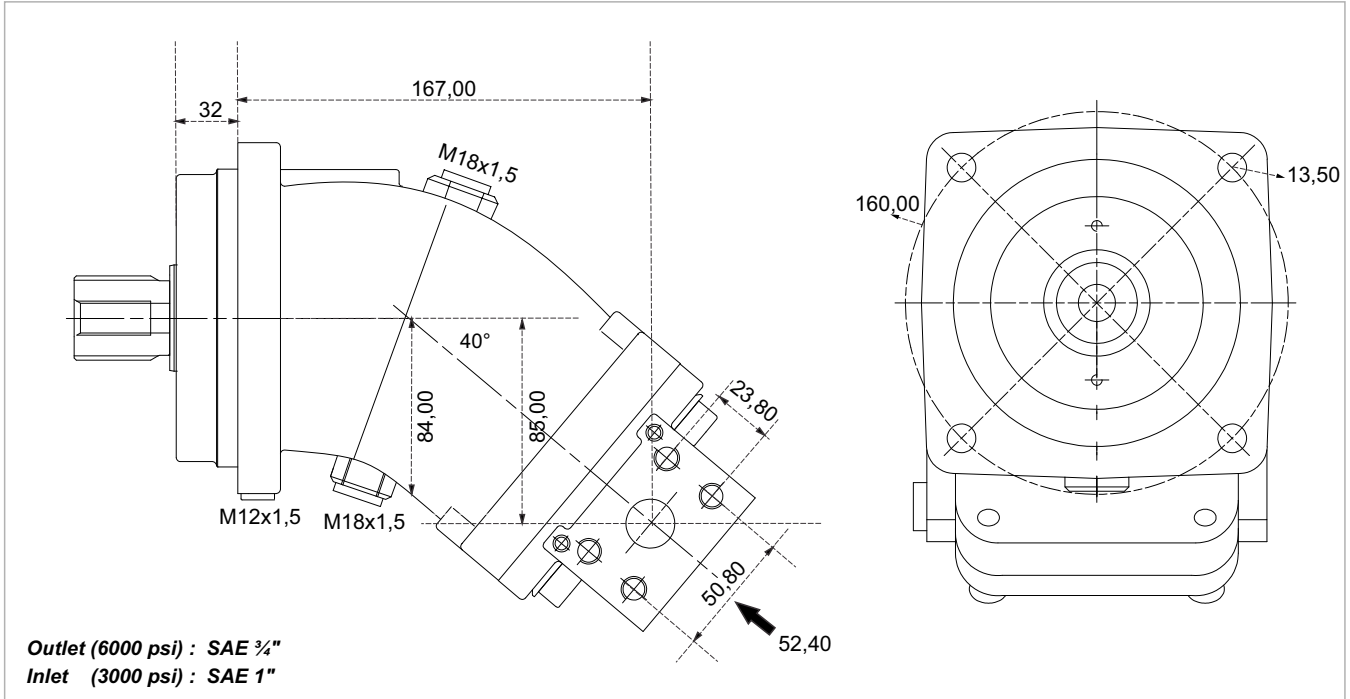
PS 50



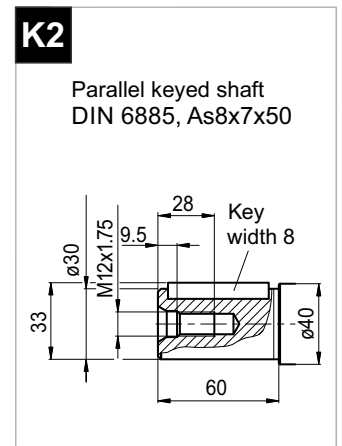
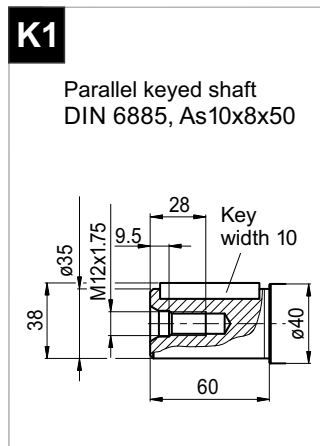
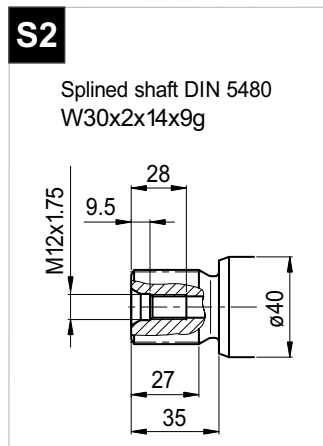
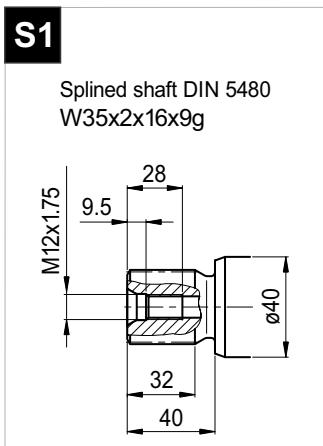
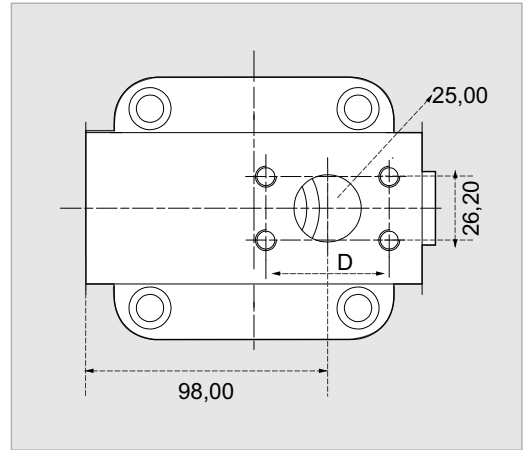
x 1000 rpm	50,00 cc
x 1500 rpm	75,00 cc
Max. Continuous Pump Speed	2300 rpm
Max. Continuous Pressure	400 bar
Max. Peak Pressure	450 bar
Max. Torque at 350 bar	280 Nm
Max. Flow	115,00 l/min.
Min. Pump Temperature	-25 °C
Max. Pump Temperature	110 °C
Weight without accessories	17,50 kg
Weight with accessories	18,00 kg
Rotation	CW-CCW



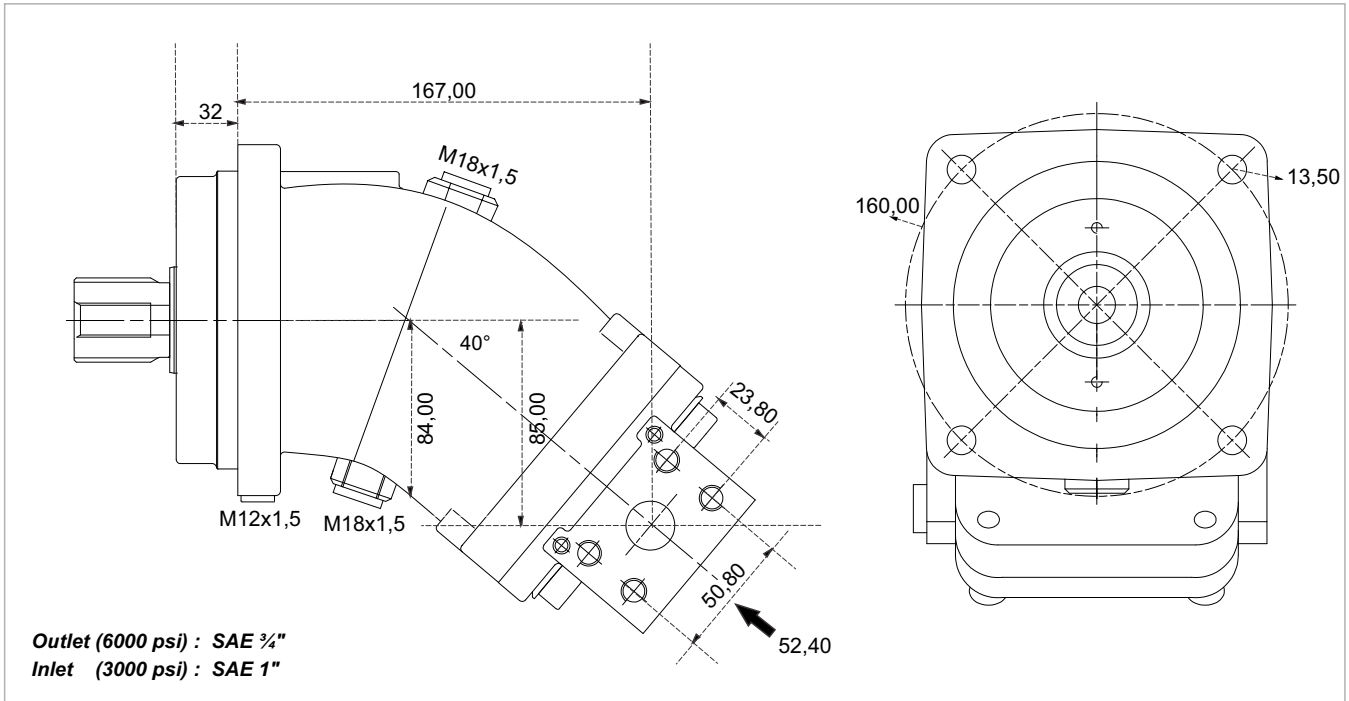
PS 56



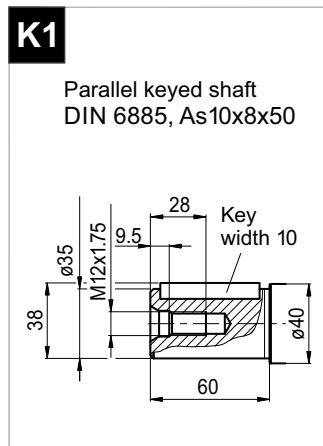
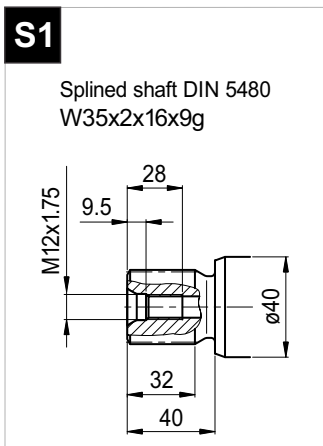
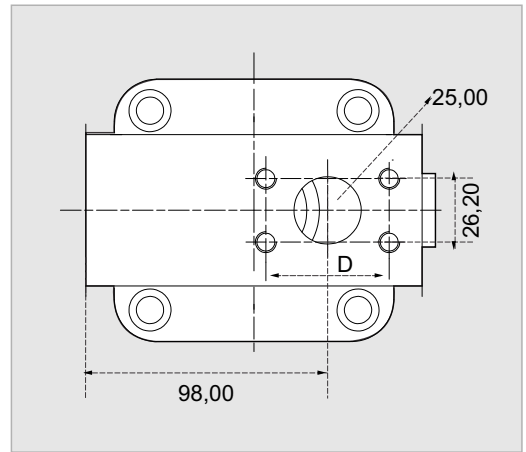
x 1000 rpm	56,40 cc
x 1500 rpm	84,60 cc
Max. Continuous Pump Speed	2300 rpm
Max. Continuous Pressure	400 bar
Max. Peak Pressure	450 bar
Max. Torque at 350 bar	320 Nm
Max. Flow	129,70 l/min.
Min. Pump Temperature	-25 °C
Max. Pump Temperature	110 °C
Weight without accessories	18,00 kg
Weight with accessories	18,50 kg
Rotation	CW-CCW



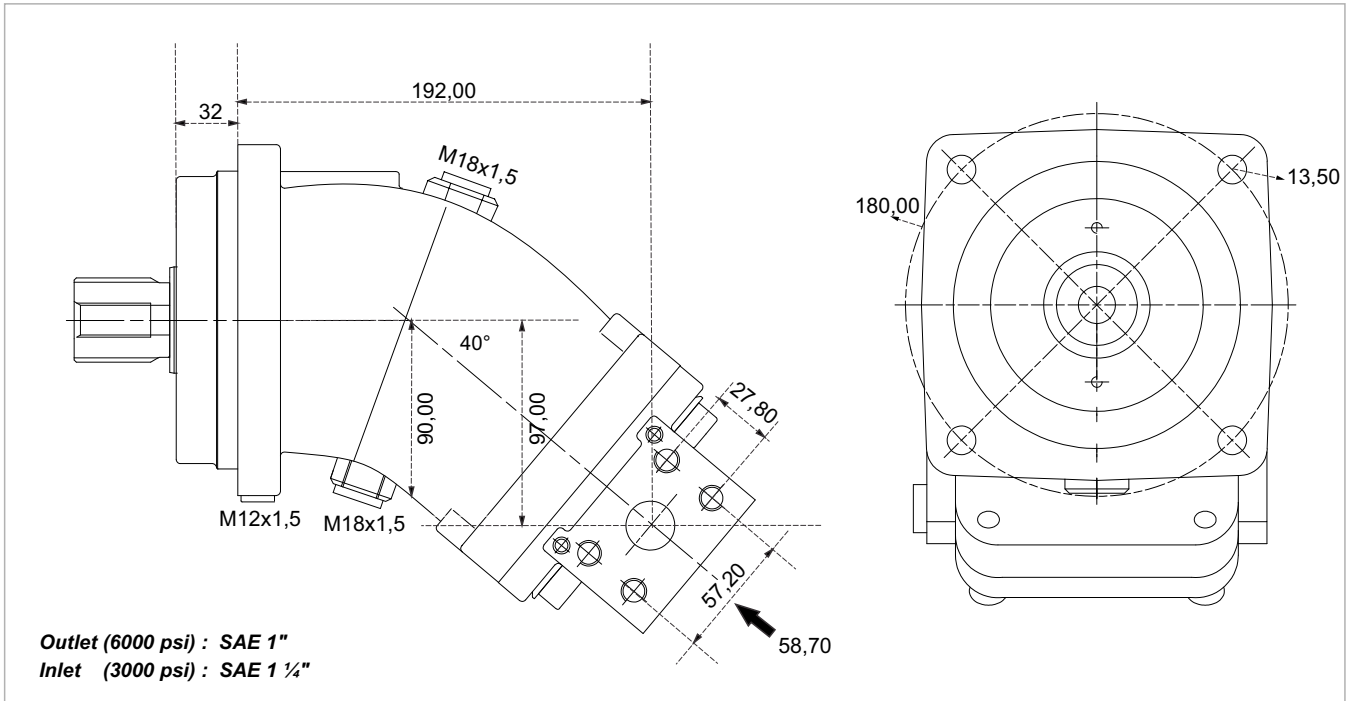
PS 63



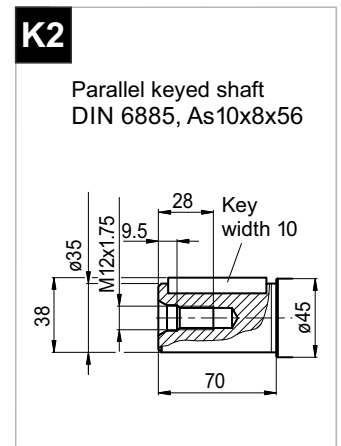
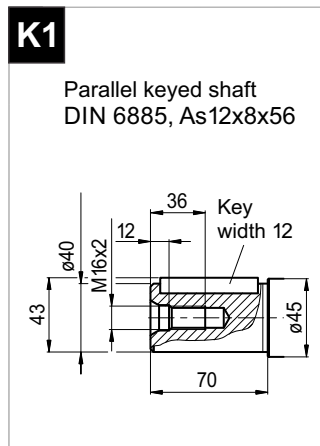
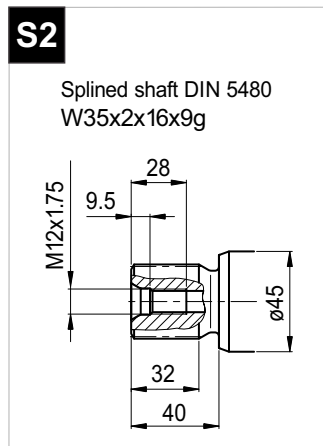
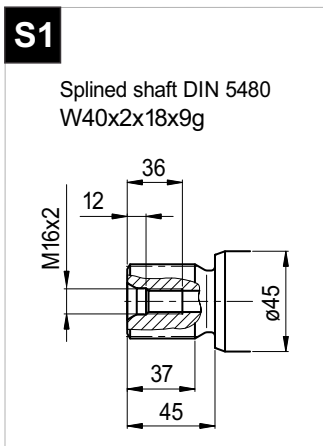
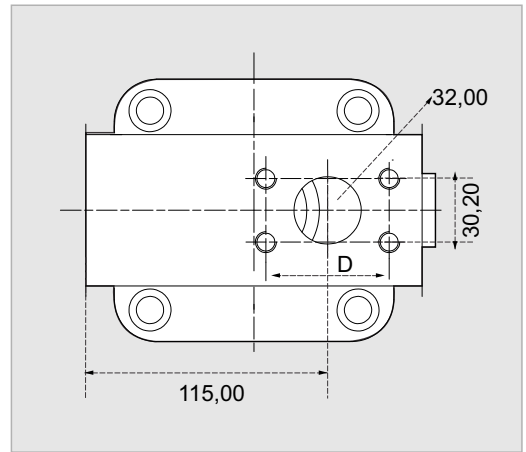
x 1000 rpm	63,00 cc
x 1500 rpm	94,50 cc
Max. Continuous Pump Speed	2300 rpm
Max. Continuous Pressure	400 bar
Max. Peak Pressure	450 bar
Max. Torque at 350 bar	350 Nm
Max. Flow	144,90 l/min.
Min. Pump Temperature	-25 °C
Max. Pump Temperature	110 °C
Weight without accessories	18,00 kg
Weight with accessories	18,50 kg
Rotation	CW-CCW



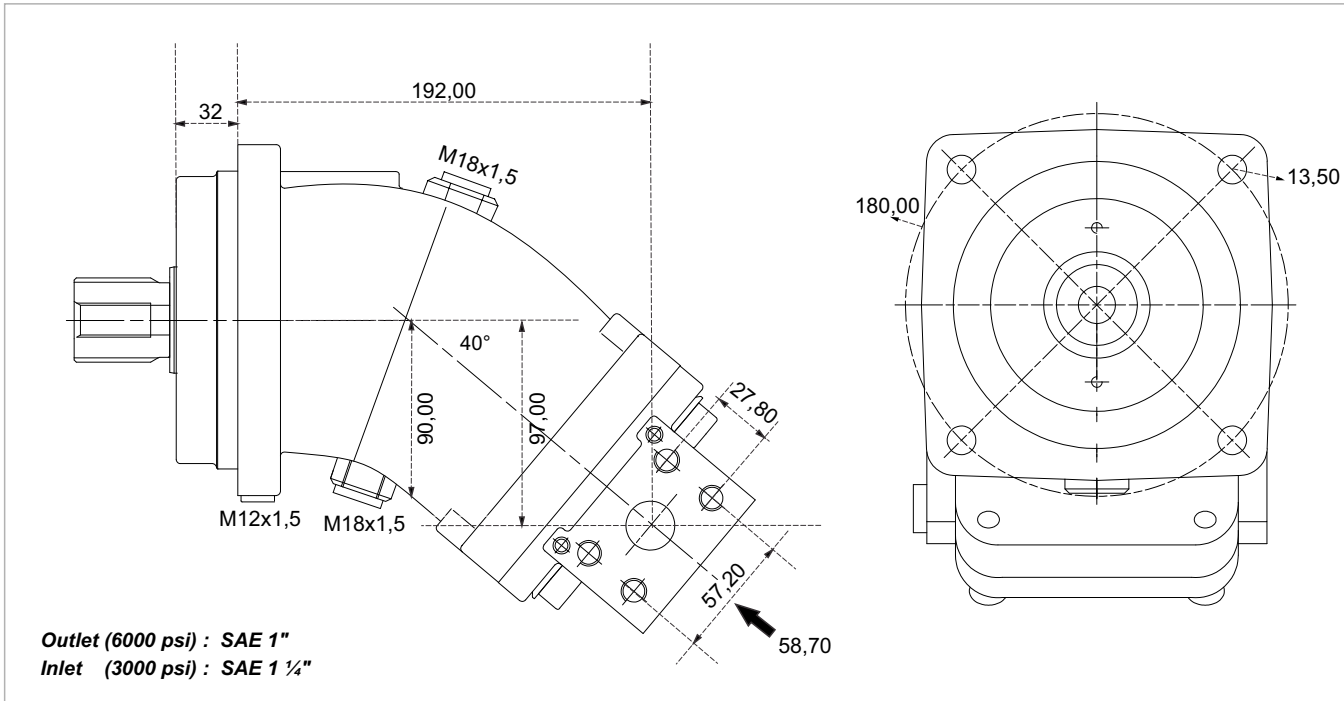
PS 80



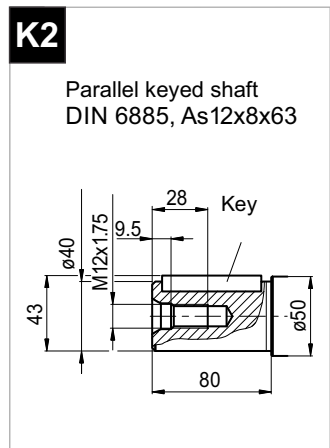
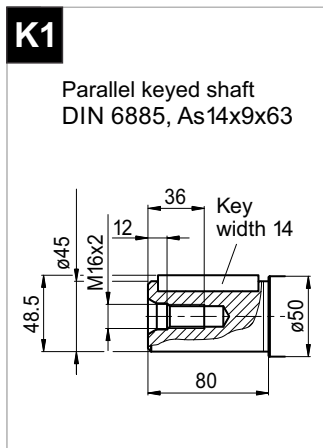
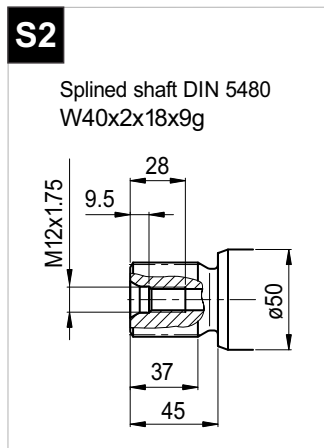
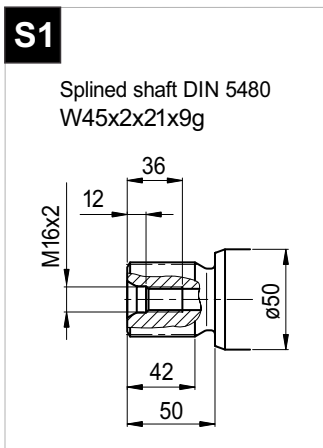
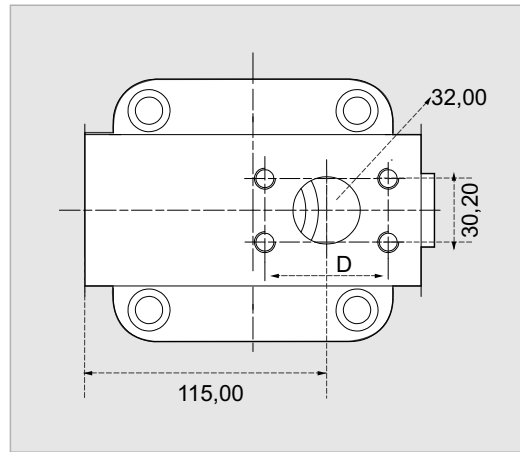
x 1000 rpm	80,00 cc
x 1500 rpm	120,00 cc
Max. Continuous Pump Speed	2300 rpm
Max. Continuous Pressure	400 bar
Max. Peak Pressure	450 bar
Max. Torque at 350 bar	445 Nm
Max. Flow	184,00 l/min.
Min. Pump Temperature	-25 °C
Max. Pump Temperature	110 °C
Weight without accessories	22,00 kg
Weight with accessories	22,50 kg
Rotation	CW-CCW



PS 108

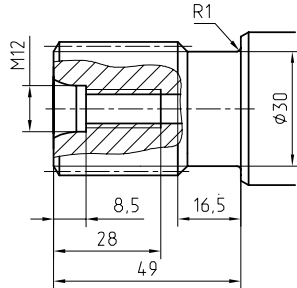


x 1000 rpm	108,40 cc
x 1500 rpm	162,60 cc
Max. Continuous Pump Speed	2000 rpm
Max. Continuous Pressure	400 bar
Max. Peak Pressure	450 bar
Max. Torque at 350 bar	600 Nm
Max. Flow	216,00 l/min.
Min. Pump Temperature	-25 °C
Max. Pump Temperature	110 °C
Weight without accessories	22,50 kg
Weight with accessories	23,00 kg
Rotation	CW-CCW

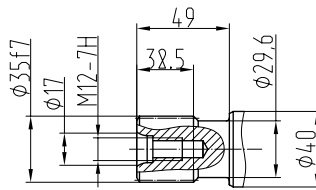


Special Shaft Drive & Special Back Cover

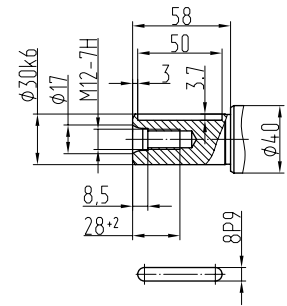
Splined shaft
35xf7x2x9g GOST 6033-80



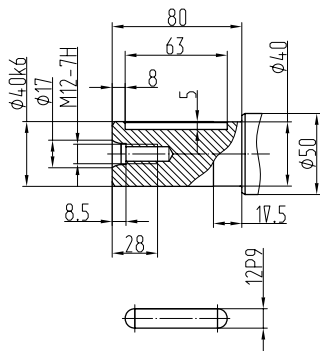
35xf7x2x9g ГOCT6033



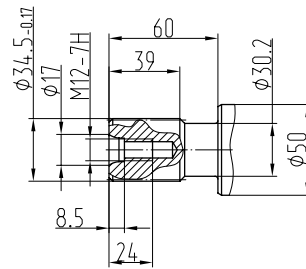
Parallel keyed shafts



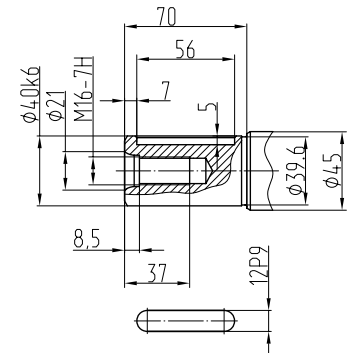
Parallel keyed shafts



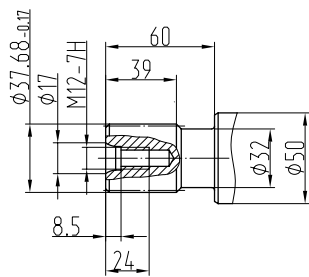
1 3/8' 21T 16/32DP ANSI B92



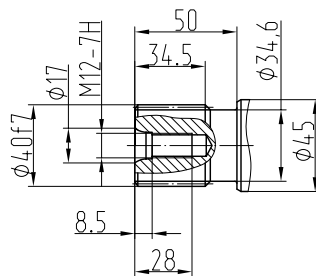
Parallel keyed shafts



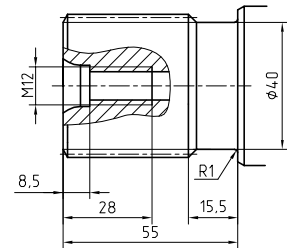
1 1/2' 23T 16/32DP ANSI B92



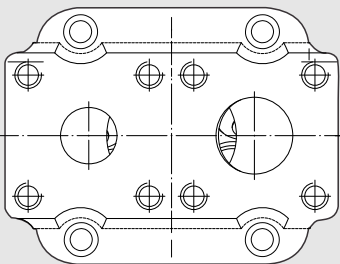
40xf7x2x9g GOST6033



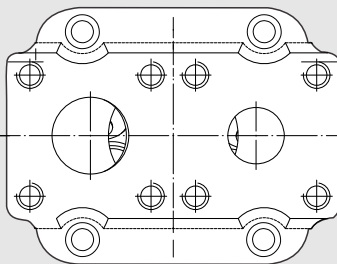
45xh8x2x9g GOST 6033-80



Special Cover / Rotation : LEFT

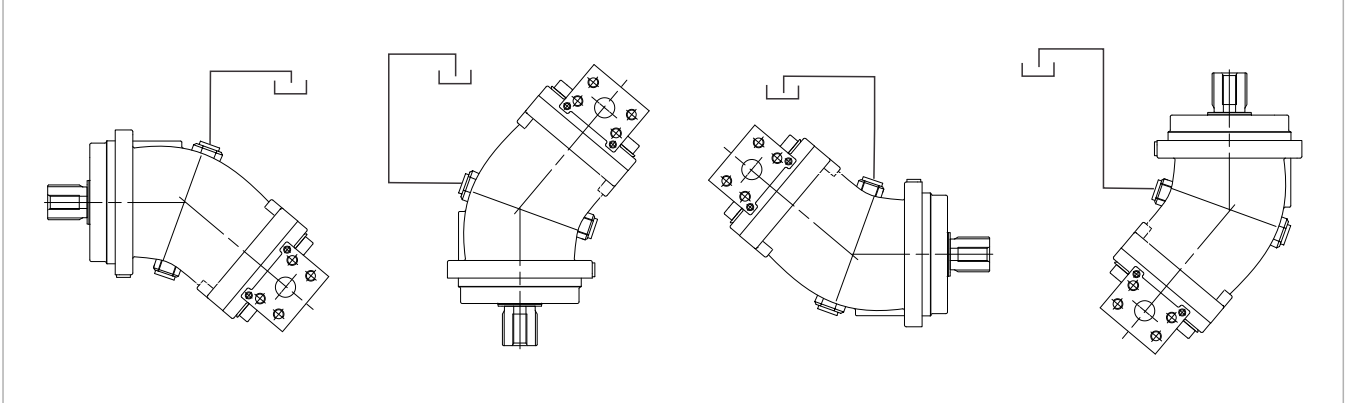


Special Cover / Rotation : RIGHT



Installation

The PS Pumps can be operate any position.
See following examples.



OIL SUPPLY

Oil and supply line should be clean, and the supply line is airtight.

SUCTION LINE

Connect the suction line, tighten the suction connection bolts in diametric pairs.
Connect the pressure line.

REPAIR

We offers a comprehensive range of services for the repair of our Bent Axis Pumps.

Repairs to the PS Bent Axis Pump may only be performed by authorized, skilled and instructed personnel.

Only use original and pre-installed our PS spare parts from supplied to Manufacturer..

Tested and pre-installed PS pumps successful repair requiring only little time.

SPARE PARTS

The spare parts list and the PS pump order specific.

When ordering spare parts, quote the material and complete Ordering code number of the PS Bent Axis Pump as well as the right numbers of the spare parts.

RISK OF DAMAGE!

Do not touch the drive shaft of the PS Bent Axis Pump

Do not touch sensor, valves and fittings

Do not touch sealing surfaces.

DIMENSIONS & WEIGHTS

Weight											
- Without accessories	kg	6,00	6,00	11,50	11,50	11,50	17,50	18,00	18,00	22,00	22,50
- With accessories	kg	6,20	6,20	11,80	11,90	11,90	18,00	18,50	18,50	22,50	23,00

Address all questions regarding spare parts to your responsible Our Service Partner or the technical service department of the manufacture's plant / factory for the PS Bent Axis Pumps.

SAFA

HYDRAULICS



PD-DIN
Bent Axis Pumps



MD-DIN
Bent Axis Motor



PA-SAE
Bent Axis Pumps



MA-SAE
Bent Axis Motor



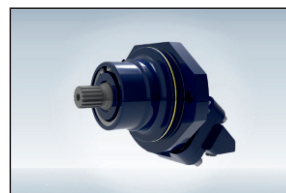
PS-ISO
Bent Axis Pumps



MS-ISO
Bent Axis Motor



PD Dual
Dual Flow Pumps



MF Fixed
Bent Axis Motor



PV
Variable Disp.
Piston Pumps

SAFA HYDRAULICS

ADDRESS:

Fevzi akmak Mahallesi 10465. Sk. Karatay | Konya / Turkey

TELEPHONE:

+90 332 342 10 21, +90 534 234 63 89, +90 539 592 71 71

FAX:

+90 332 342 45 71

E-MAIL:

info@safahydraulic.com

www.safahydraulic.com

In 6 Continents, 58 Countries Fevzi akmak Mh. 10465. Sk. Karatay +90 332 342 10 21



SAFA
HYDRAULICS

Home

About Us

Pumps & Motors

Catalogs

Applications

Quality

Contact Us



CONTACT US

Home | Contact Us

Contact Us

Contact with SAFA Hydraulics



info@safahydraulic.com

www.safahydraulic.com